



JEFFERSONIAN

Volume 33, Issue 1, Winter 2019

A PUBLICATION OF THE JEFFERSON COUNTY HISTORICAL SOCIETY

In This Issue

Events Calendar	2
JCHC in the News	2
New Board Members	2
New Board Officers	2
New CSU Intern	2
Annual Awards	3
New Acquisitions	3
Bowdish 100th Birthday	3
CUP Interns Spotlight	4
Kudos	4
Friends of SRHP	5
Scripture Rocks Park News	6
In Memorium-Ray Puller	6
In Memorium-Agnes Songer	7
Genealogy Corner	7
Bowdish Birthday Bash	8
Bowdish Schedule	8
Curator's Corner	9
Stones N 'Bones Exhibit	10
Military Collectibles Show	11
Bowdish Christmas Pics	12

The Jeffersonian is published in Feb., June, October. Submissions welcome. Send to Ken Burkett c/o JCHC.

JCHS Receives PHMC State Historic Preservation Office Award

The Jefferson County Historical Society is the proud recipient of a Community Initiative Award from the State Historic Preservation Office (SHPO), a division of the Pennsylvania Historic and Museum Commission.

Ken Burkett, as our Executive Director and as President of the North Fork Chapter 29 of the Society for Pennsylvania Archaeology, accepted the award from Andrea Lowery, PHMC Executive Director at SHPO's Historic Preservation Awards Event at the State Museum in Harrisburg on September 27th, 2018.



The JCHS was selected as an example for community partnerships due to our longstanding partnership with the North Fork Chapter 29 in our events, exhibits, and collaborative excavations of archaeology sites including the Port Barnett Rockshelter in the Scripture Rocks Heritage Park.

SHPO also shot a short video with Ken about the park and they came to the park in November to make another short documentary. These will both be available soon on s YouTube channel.

To find out more about North Fork Chapter 29 activities, meetings, or to join, go to <http://northfork29.org>.



GRANTS

We would like to acknowledge the Pennsylvania Historic Museum Commission for our 2019 annual Operations Grant of \$4000. These funds helps pay for some of our utilities. We also would like the thank the Jefferson County Hotel Tax Committee for our 2019 marketing grants that allows us to market through development and distribution of rack cards along the I-80 corridor and at PA Great Outdoors visitor locations for the History Center, Scripture Rocks Heritage Park and the upcoming fall Antique Rifles and Indian Artifact Show.

JCHC In the News

2019 Events Calendar

Saturday, February 23
12 pm - 4 pm
Bowdish Birthday Bash
JCHC

Saturday, March 9
9 am - 4 pm
Military Collectibles Show
Jefferson County Fairgrounds

May 5 - Sept 29
Every Sunday at 2 pm
Guided Tours
Scripture Rocks Heritage Park

June 15 - 23
Special Bowdish Model Railroad
Laurel Festival Family Day TBA

Sat-Sun August 17-18
All Day
JCHS at the Elk Expo
Elk Country Visitor Center
Benezette, PA

Saturday, August 31
9 am - 4 pm
Antique Rifles & Indian
Artifacts Show
Jefferson County Fairgrounds

JCHS Announces 2019 New Board Members and Officers



Colleen receiving Arthur
Altman Award (see page 3)

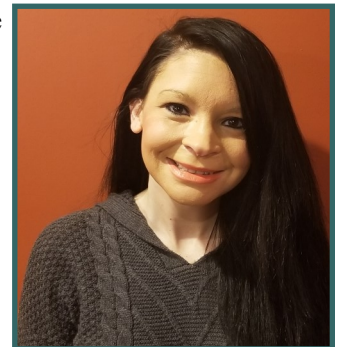
2019 new board members are Colleen Cooney and Danielle Gabler.

Colleen lives in Summerville with her husband ***. She is a member of the Summerville Story Project Group and contributing author of the book *Troy/Summerville, Pennsylvania* (2016) which grew out of this group. Her parents had Hummel's store, now preserved on one of the Story Projects's historic plaques in Summerville. She also has quite an impressive local arrowhead collection.

Danielle lives in *** with her *****. She is the is Director of (Census) Development at WRC Senior Services here in Brookville. .

The newly elected JCHS officers for 2019 are Tracy Zents, President; Larry Anthony, Vice-President (continuing); Vickie Storey, Treasurer (continuing); Jess Weible, Secretary. We thank Eric Armstrong for his 4 long years serving as a very active President.

Tracy started Winter 2018 and so actively participated in our events and exhibits that he got himself elected President. Larry chairs the Nominations Committee, serves on the Events Committee, and is our Escape Room wizard. Vickie is the "Bowdish Boss" and as the town's former Tax Collector, she makes a perfect Treasurer and serves on Finance, Exhibits and Shop Committees. Jess is a prior elementary school teacher and also serves on our Education Committee.



New Clarion University Intern Megan Herbert

During my time at Drake Well Museum and Park, I worked with the curator to organize and move many artifacts into a permanent home in the museum's collection storage. I wrote accessions files, updated files and cataloged photos of the old oil fields around Titusville, PA. I enjoyed my time at Drake Well and met many amazing people, learning many skills for my future career. I am so thankful for the opportunity to work at the Drake Well museum and look forward to learning more curatorial skills at the History Center.

The JCHS internship program is funded through a permanent endowment created by two local businesses and the Institute for Library and museum Science with the Clarion University Foundation. The JCHS utilizes this fund as a perpetual program by only withdrawing the annual interest provide a stipend for our internship program. Megan is our 10th internship.

JCHC in the News

Annual Meeting Awards

At October's Annual Meeting, the Arthur Altman Award was presented to volunteer Austin Fields for researching and writing the successful nomination for the William J. McKnight State Historic Marker which now stands in front of the McKnight Building, now the Courthouse Grille and Pub.

The Kate Scott Award was presented to Colleen Hummel Cooney (left) for her work in planning and developing the Summerville Veterans' Memorial.



Colleen and **Dan** Cooney at the Summerville Veterans Memorial dedication

The JCHS Annual Awards are presented at the Annual dinner in October to groups or individuals who have worked in some way to help preserve the history of Jefferson County. To nominate a deserving group or individual, please contact kburkett-jchc@weindstream.net



Austin with the McKnight State Historic Marker

New Acquisitions of Note:

We recently received a donation of stained glass originating from the windows of the 1869 Courthouse building. They were probably removed in the 1927 renovation. The donation was made by Jane Ford of Grove City from the Charles Fitzsimmons property in Corsica. Unfortunately, they are in shards, but we will be consulting with a conservationist.. Kate Scott's 1888 History of Jefferson County states: "The court-room., which is the second story.. is well-lighted through beautiful stained glass windows."

Another significant acquisition donated by Mike McMurray is a 1949 Lionel Trainset, 'O' gauge, complete with train station and other supporting buildings, which the Bowdish Group is delighted to add to their train exhibit.

Charlie Bowdish **100th** Birthday Bash !

2019 is the 100th anniversary of Charlie Bowdish's annual model railroad displays which began on Christmas 1919 and continued in Brookville until 1954 before most of the exhibit moved to the Buhl Planetarium (now the Carnegie Science Center), Pittsburgh.

Annually, on the last Saturday of February, the Bowdish volunteers open a newly revised model railroad layout at the JCHC featuring some of Charlie's original models and animations along with many that are newly created by our Bowdish modelers. Bring the kids - and the kid in yourself — Come see and hear that train whistle down the tracks through Tunnel Hill!

The event will also showcase the opening of our new exhibit *Gone But Not Forgotten!* featuring numerous paintings of departed artists of Jefferson County dating from the mid-19th century through today.

JCHC in the News

CUP Interns in the Spotlight

Every semester JCHC offers paid internships via a scholarship endowment through Clarion University Foundation. We were lucky to have two exceptional interns to help us with the new Stones N' Bones 3-Gallery exhibit.

Emily Tyson was our intern for Winter-Spring 2018 and Abby Beckwith (right) in Fall 2018, both environmental geoscience and geology majors. They researched ideas, assisted with writing the text for the panels and with layout of the exhibit. Abby was "surprised to learn how much work and research goes into curating an exhibit and how difficult it is to explain complex concepts to make them interesting and understandable."

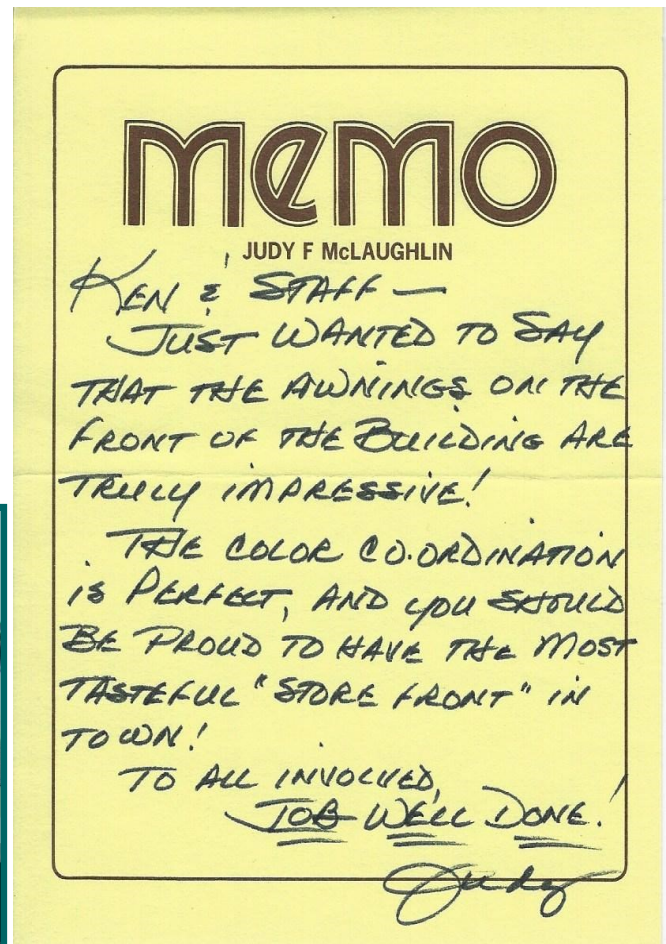
They are spotlighted on CUP's (Clarion University of Pennsylvania) webpage and you can read more about them at <http://clarion.edu/news/2018/december/stone-n-bones.html>.



Kudos from Our Members

We received this note from Judy McLaughlin - along with her membership - regarding our new awnings. This photo of our new awnings was in the fall newsletter, but here it is again, so you can appreciate what she is talking about. Thanks for noticing, Judy! If any more members would like to send us kudos, we do appreciate it.

We'd also like to thank HBI for partial funding for the awnings from their fund to beautify building facades along Main Street.



(We couldn't agree more !)



SRHP In the News

JCHC Announces “Friends of Scripture Rocks Park” to be Formed

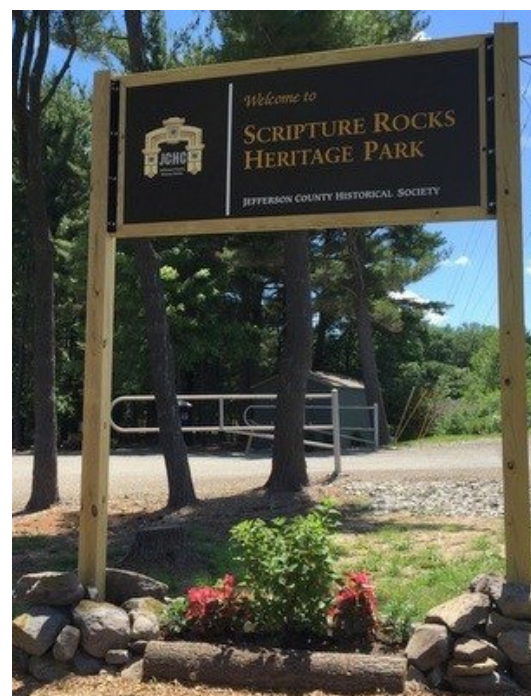
We are starting a Friends Group for the Park that will be under the umbrella of JCHS. A Friends Group acts to achieve many things, such as increase public awareness, provide volunteer support for programs and events, advocate for a particular project (like the Park!), help raise funds, and act as a bridge between the Park and the community. Acting together, members of a Friends Group can help achieve goals that might not otherwise be achieved.

Annual Membership Levels are:

Friend \$25 Steward Friend \$100

Benefits Include:

- ◆ Annual Picnic at the Park
- ◆ Free Tours/Programs currently offered every Sunday Spring—Fall
- ◆ Bi-Annual SRHP Newsletter Spring and Fall
- ◆ Mailing List for Announcements of Events
- ◆ Docent Training, Leading Tours, Learn how to be a Steward
- ◆ Participation in our Events at the Park
- ◆ Participation in Work Days at the Park
- ◆ Friends’ Names Mounted in Park Kiosk and on SRHP Website



2019 Friends of Scripture Rocks Membership Form

Name: _____

Address: _____

City: _____ **State:** _____ **Zip:** _____

Phone: _____

Email: _____

Membership Level:

Friend \$25 _____ **Steward Friend \$100** _____

TOTAL ENCLOSED: \$ _____

Return with Your Check Payable to:

**JCHS
P.O. Box 51
Brookville, PA 15825**

Credit Card: Call 814-849-0077

Scripture Rocks Heritage Park News

Kat Lyons



SRHP Mission Statement: “To preserve and present a free, publicly-accessible heritage park as an outdoor museum for all ages to explore and enjoy. It encompasses the unique legacy of Douglas Stahlman and provides an educational experience that includes historical, cultural and environmental aspects of the park.”

SRHP Closed for the Winter.

Tours, Environmental Education Programs and Scavenger Hunts: Watch for Dates/Times to be announced in spring on our websites and next newsletter.

Projects: We have some exciting projects coming up this spring! Watch for announcements!

Group Tours/Reserving Pavilion: If your groups wishes to reserve the picnic pavilion or schedule a private guided tour, contact JCHC or email Ken Burkett at kburkett-jchc@windstream.net.

SRHP Tour Guides Wanted: Train to be a docent!

WANTED! Do you have a Golf Cart or ATV sitting in your garage collecting dust? Think of donating it to SRHP! We want to offer handicapped individuals access to the trails like we did in summer 2017 at the Members’ Picnic, when we were loaned a golf cart for the day. So if you have one, or know of one, give us a shout !

In Memoriam: Ray Puller (1953—2018)

JCHS Board Member, Scripture Rocks Park Landscaper, Tour Guide and Trail-BUILDER; Re-Enactor on the

Eerie Tales Tour of downtown Brookville

Remembering Ray...Most Brookville-ites remember Ray as a teacher and principal. Or heading the Cliff Puller Blood Drive every September. But, if you’ve been to Scripture Rocks Park or on our Eerie Tales or Cemetery Tours, you probably remember Ray in a different way.

Remember the big barrels planted full with brilliant flowers at the SRHP parking area/trailhead? That was Ray. Remember a grinning tour guide with a straw sunhat? That was Ray. Remember meeting a happy trail-builder on your hike who was wheeling a load of gravel to fix a trail? That was Ray. Remember an impassioned actor on the Eerie Tales tour? That was Ray. Remember a re-enactment of Indian on one of our cemetery tours? That was Ray, too.

We knew Ray as a very gifted individual with an engaging personality and a way of making you laugh, not just sometimes, but ALL the time. He put his heart and soul into the Park and History Center, and he will be missed here.



In Memorium: Agnes Songer (1912-1917)

Agnes (Clark) Songer was a Sigel native, the Sigel postmistress for almost 30 years from 1944-1973, and was 104 years of age when she passed away.

She was a long-time member of the History Center. JCHS presented Agnes with our Kate Scott Award in 2010 for establishing the Songer building at the Jefferson County Fairgrounds to preserve agricultural history. The building houses farm machinery, tools, wagons, a recreation of the Sigel post office complete with original mailboxes and a complete country kitchen among other artifacts.

JCHS recently received a bequeathment from her estate, which grows our permanent endowment to maintain the History Center in perpetuity. Thank you Agnes for your generous gift.



JCHS BOARD of DIRECTORS

President

Tracy Zents—2020
earmst@windstream.net

Vice-President

Larry Anthony—2020

Treasurer

Vickie Storey—2019

Secretary

Jess Weible—2021

Eric Armstrong—2020

Randy Bartley—2019

Colleen Cooney—2021

Danielle Gabler—2021

Dave McCracken—2019

Amy Salsgiver—2019

Chuck Williams—2020

STAFF

Kenneth Burkett, Executive Director
kburkett-jchc@windstream.net

Carole Briggs, Curator
cbriggs-jchc@windstream.net

Kat Lyons, Admin. Coordinator
Grants/Research/Genealogy
klyons-jchc@windstream.net
or jchc@windstream.net

PATHSTONES

Jack Neale, Research
Peggy Baughman, Shop & Projects
Janet Bucheit, Scripture Rocks Park
Kris Scott, Projects
Fay Williams, Shop

VOLUNTEERS

Jack Burkett	Lakota Dunn
Austin Fields	Tom Glover
Ray Hannold	Carol Hollobaugh
Mark Kerr	Pete Lindenmuth
Bill McCracken	Jerry McGiffin
Harry Neuhard	Faye Noonan
Art Schrecongost	Jo Schrecongost
Judy Shirley	Pat Steele
Mike Tattersall	Jack Theisen

The Jefferson County Historical Society



invites you to consider us as part of your estate planned giving with a gift that honors your philanthropic intentions while achieving your financial and tax planning goals.

Gifts can reduce capital gains and estate taxes. As a recognized 501(c)3 non-profit organization, all donations to the JCHS are fully tax deductible.

Whatever your gift might be, large or small, please know it is deeply appreciated and will be used exclusively for the long term goals of the Society to preserve and exhibit Jefferson County history.

Genealogy Corner

New Acquisitions: 4 boxes of Family Genealogies just arrived from the Olympic Peninsula, Washington state, including Brosius, Reitz, Snyder, Crawford, Sink, Raybuck, Powell, Silvis, Lucas, and Freas.

If you would like to research your roots, remember we have a Research Library full of resources and public computers that members can use for free. Whether you just need an obit, or are compiling an entire Family Genealogy, we can help. If you already have a Family Genealogy in book or notebook form, we would love to have a copy for our shelves.

Upcoming Events

You're Invited!



Charlie Bowdish 100th Birthday Bash

**Saturday, February 23rd
11 - 4 pm**

Special Running of the Newly Redesigned

Bowdish Model Railroad

NEW EXHIBIT OPENING

Gone But Not Forgotten:

Jefferson County Artists of the Past

Recently Opened ! "Stones N' Bones"

Admission by Donation

Jefferson County History Center
172 Main Street, Brookville, PA

(814) 849-0077
jchconline.org



Model Railroad Schedule

**Saturday, February 23
12 - 3 pm**

**Saturday, March 30
12 - 3 pm**

**Saturday, April 27
12 - 3 pm**

**Saturday, May 25
12 - 3 pm**

**Saturday, June 29
12 - 3 pm**

**Saturday, July 27
12 - 3 pm**

**Saturday, August 31
12 - 3 pm**

**Saturday, September 28
12 - 3 pm**

**Saturday, October 26
12 - 3 pm**

**Friday, November 29
Light-Up Night
5 - 9 pm**

**Friday, December 6
Victorian Christmas
5 - 9 pm**

**Saturday, December 28
12 - 3 pm**

Curator's Corner

Carole A. Briggs

New Exhibit Opening on Bowdish Birthday Bash, Saturday February 23rd**GONE! BUT NOT FORGOTTEN: Jefferson County Artists of the Past**

Several years ago, curators from the Erie Art Museum visited the History Center, looking for paintings to incorporate into an exhibit they were preparing. They took nothing. They found no artists of note in our county.

That may be true. We have no Andrew Wyeth as Bucks County has. We have no Andy Warhol as Pittsburgh has. But we do have artists, so many that their paintings now hanging in the Grand Hall on the second floor leave only inches to spare.

When Bill and Carol Hawthorne donated a painting by Ambrose Kline last year, the painting suggested to us that exhibiting the paintings of artists no longer living would be important to do in 2019, so we put out a call. The Punxsutawney Area Genealogical & Historical Society responded, as did the Brockway Area Historical Society, and the Reynoldsville Historical Society.

Individuals have come forth with paintings, and now the walls of the Grand Hall are full to overflowing. Exhibited in the parlor are paintings by Bonnett, Coxson, and Anna Barclay, all painted during the 19th century. In the Grand Hall, three oil paintings by Kline and three by Dorothy Reitz have been grouped with paintings by Grace Byers of Punxsutawney. Watercolors by Joe Enterline and Mary Deemer North hang together.



Ambrose Kline painting.

Tucked in one corner is "Five Roses" by Brookville's Emma Slicker and in another corner, a recently discovered watercolor, "Two Roses," by Charles Albert Bowdish. Humorously, we've paired a Punxsutawney artist's painting of an outhouse with an outhouse miniature, created by Charley as a gift to Stu Chesnutt in 1993, something Charley did more than once!

Three-dimensional pieces are exhibited in tabletop cases that depict "Art Forms," "Teachers, Students, and Art," and "Women's Art." We have compiled a list of art teachers, too.

According to E. A. Bucchianeri, "Art is in the eye of the beholder, and everyone will have their own interpretation," and so during 2019 we have on exhibit for you many examples of Jefferson County art. Stop in and see what catches your fancy. Think about how you interpret what the artist has composed. But most of all, enjoy the work of these talented men and women.

NOTE: The History Center does keep a list of artists, their paintings, and where those paintings are, so if you would like to add paintings you own to the list; send us an image and the information.

Exhibits Recently Opened

Stones N Bones: Kids Having Fun and Learning

From Kindergarten to Middle School, kids big and small are having a blast at the popular Geology, Paleontology and Ice Age Mammals exhibit. (Adults like it, too). We make it fun to learn about the early prehistory of western Pennsylvania though the fossils, dioramas, videos and rock and mineral specimens with something for every age group.



A middle school student (left) learning about the differences between a Woolly Mammoth and a Mastodon and the differences in the structure of their teeth which enabled them to source different foods in a varied woodland or grassland thus allowing them to co-exist.



Dress-Up like a dinosaur or caveman at our Selfie Station

The video on the computer screen tells the story of these gigantic mammals who once lived here and are the ancestors of living elephants.



A budding miner searching for coal in the Whistle Pig Mine in the Geology Exhibit



Kindergarteners learning about the Dimetrodon, an early reptile. The biggest question is always "Is this a dinosaur?" and "Why does it have those big spines on its back?" and "Wow! Look at those big teeth!"

This is Board member Amy Salsgiver's son, Kemmer, and his class on his birthday in January.

To Schedule Your School Group or Birthday Party Call 814-849-0077
or email kburkett-jchc@windstream.net

Upcoming Events

JCHC Military Collectibles Show

The Jefferson County History Center's 5th annual Military Collectibles Show will be held on Saturday, March 9 from 9 am to 4 pm at the Jefferson County Fair Grounds. This indoor event of vendors and exhibitors features two buildings of military collectibles including weapons, uniforms, insignia medals, photographs, books and other items dating from the Civil War to the present.

The event will also feature door prizes and a raffle for a replica 1911 Springfield pistol and firing miniature Napoleon cannon. Our annual raffle features a first prize of a Rock Island M1911 pistol which represents a perfect replica of a US GI combat issue 1911. This gun is chambered in 45 ACP and features a 5" barrel fixed low profile sights and a traditional smooth slim design with smooth wood grips.

The second prize is a Traditions™ Mini Napoleon Cannon that is a stunning small replica of those used by the North and South Armies during the Civil War. Weighing only 3 lbs, this 13.5 inch long showcase cannon is totally accurate with a select hardwood carriage and nickel plated barrel. It is fully operational with a .50 caliber bore and comes ready to display or fire.

Admission is only \$7 for adults and free for children 16 and under. Food concession all day. Vendor Tables are still available. For more information, contact the Jefferson County History Center at (814) 849-0077 or visit the website at

5TH ANNUAL MILITARY COLLECTIBLES SHOW

**SATURDAY
MARCH 9, 2019
9:00 AM - 4:00 PM**

**JEFFERSON COUNTY
FAIRGROUNDS
RT. 28, 1/4 MILE NORTH OF
INTERSTATE 80, EXIT 81**



**FEATURING MILITARIA FOR SALE, SHOW AND
TRADE FROM THE CIVIL WAR TO THE PRESENT**

ADMISSION: ADULTS - \$7.00 CHILDREN UNDER 16 - FREE

FOR TABLE RESERVATIONS OR INFORMATION: EMAIL: kburkett-jchc@windstream.net
Tele: (814) 849-0077 OR VISIT WWW.JCHCONLINE.ORG

BENEFITS THE JEFFERSON COUNTY HISTORICAL SOCIETY



JCHS Military Show Raffle

1st Prize = Rock Island 1911 45 ACP Pistol

2nd Prize = Traditions Mini Napoleon II Cannon



Tickets \$5 or 5/\$20

Available at JCHC or at the Show

Drawing

**March 9, 2019 at 4:00 pm
Jefferson County Fairgrounds**

Small Games #223/2019

INFO: Call 814-849-0077 or email kburkett-jchc@windstream.net

Bowdish Trains at Light-Up Night



**Bowdish Revelers with Vickie Storey and Bill McCracken
of the Bowdish Volunteers**



**Art Schrecongost & Pete Lindenmuth of the Bowdish
Volunteers with the Train Controls**

The Jefferson County
Historical Society
172-176 Main St.
P.O. Box 51
Brookville, PA 15825

(814) 849-0077
jchc@windstream.net

<http://jchconline.org>
and scripturerocks.com

Museum Hours
Tues. - Sat.
11 AM - 4 PM

Closed Sundays,
Mondays, and Holidays

We typically close when
our schools close due to
weather, and urge you to
phone before traveling
any distance.

Exhibit Admission

By Donation
JCHS Members - Free

Genealogy
Contracted Research
\$25 /Hour
(1 Hour minimum)

In-House Assisted
Research
\$25/Hour
(after 1st 1/2 hour)

If you would like to
receive our
E-newsletter
and announcements
of events and
activities at JCHC ,
Please SIGN UP at
jchconline.org

NONPROFIT ORG.

U.S.POSTAGE paid
Permit No. 11

Jefferson County Historical Society Annual Membership Application

Individual \$25/12 months Family (Household) \$35/12 months Life \$500.00

Name _____

Mailing Address _____

Email Address _____

Phone: _____

Our Mission

Our purpose is to engage people of all ages in the history of Jefferson County. We collect and care for relevant objects, images and documents and invite county residents and visitors to research our materials, interact with our exhibits, take part in our programs and read our publications, in order to encourage an understanding of our past and present and afford a vision for the future.