

In This Issue

Events Calendar	2
Postcard Book	2
JCHC in the News	3
Membership Matters	3
Board of Directors	3
Upcoming Events	4
Announcements	6
Scripture Rocks News	7
Raffle	8
Bowdish Schedule	8
Curator's Corner	9
50th Anniversary	10

An Award-Winning Park

Scripture Rocks Heritage Park is officially an award winning park! In March, JCHS received the Institutional Special Achievement Award for Scripture Rocks Heritage Park from PA Museums at their conference in Erie. The award is given for a successful community project that enhances public history and cultural tourism.



This award was followed by the President's Cup Award, given by the Brookville Area Chamber of Commerce at their Annual Awards Luncheon, for the leadership, development and positive impact of the park to this community. Per Eric Armstrong, JCHS President, "This was just a dream six years ago. We never imagined that it would have as much impact as it does."

Stay tuned for another exciting announcement! Go to www.scripturerocks.com and look for our next newsletter later this year.

Director Wins a Leadership Award

This past March at the PA Museums Conference, JCHC Executive Director, Ken Burkett, received an Individual Special Achievement Award for his exemplary leadership in the planning and development of SRHP, JCHS's first outdoor museum. The park is a recreational and educational venue that brings cultural heritage tourism to the community.

Upon receiving the award, Ken said that although he was the one that received it, he "could never accomplish anything without the volunteers and community."



The Jeffersonian is published in February, June, and October. Submissions are always welcome and should be directed to Ken Burkett c/o the History Center.

2017 Events Calendar

Scripture Rocks Programs :

Every Sunday at 2 p.m.

Radio Play:

Fri., June 23 at 8 p.m.

Sat., June 24 at 6 p.m.

Member Appreciation Day:

Sun., July 23 at 2 p.m.

Firearms and Artifacts Show:

Sat., Sept. 2 from
9 a.m.-4p.m.

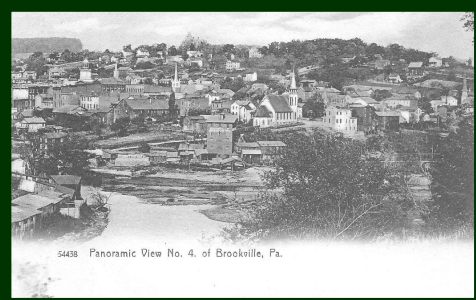
Authors Wanted

We are always accepting manuscripts for the Jeffersonian Journal which is our annual publication about Jefferson County history.

Email Alyssa Snyder at
asnyder-jchc
@windstream.net
to submit an article.

Arcadia Postcard Book

For the history organizations in Brockway, Brookville, Punxsutawney, and Reynoldsville our postcard collections are important for documenting our communities during the twentieth century. They provide us with pictures of our past and with comments from people now gone. They help us date places and show us what folks deemed important about the places in which they lived.



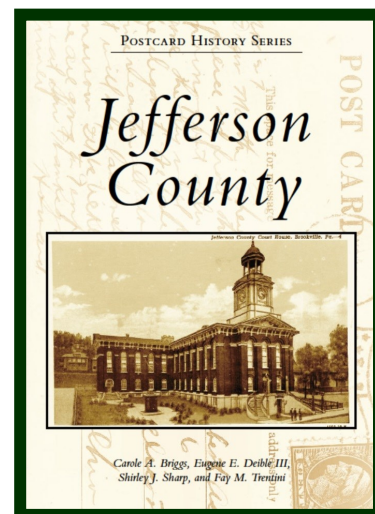
A new publication, *Jefferson County*, will soon be available at these organizations. Six chapters highlight the county seat, our towns, hotels and shops, business and industry, schools and churches, and finally the kinds of people and events we remember.

A predominate way to communicate in the twentieth-century, today flea markets and antique shops offer old postcards for sale. Heirs sorting estates find boxes of postcards in attics and bureau drawers. Fortunately, many of them end up in local historical societies.

For this book, the Brockway Area Historical Society included a series of images that show the development of Brockway Glass, including one that pictures both the building and the workers at the Brockway Machine Bottle Company. From this modest start it would become a precursor of the Brockway Glass Company, one of the world's largest glass container manufacturers. The Punxsutawney and Reynoldsville historical societies and JCHC have contributed postcards from their collections as well.

Postcards in and of themselves have a history. The federal government regulated private postcards prior to 1907. The Divided Back or Golden Age Era of postcards lasted from 1907 to 1915. White borders signified the Early Modern Era from 1915 to 1930. The Linen Card Era began in 1930, and the Modern Photochrome Era began in 1939.

The postcards in this new publication, *Jefferson County*, represent all five eras of postcard production and they have been important sources of documentation for all of our organizations. If you want to add this book to your local history collection, go to page 8 to pre-order your copy!



The History Center in the News

Recently, the Jefferson County History Center received funding for advertising from the Jefferson County Hotel Tax Grant and PA Great Outdoors. This grant will help fund 36, 30 second TV commercial spots– featuring JCHC and SRHP as tourist destinations– that will air sometime during the months of June, July, and August. A total of 36 ad spots per month will be broadcasted by WJAC TV. The 2016 grant has also helped fund a full page advertisement in the spring 2017 PA Welcome magazine.



Not to mention, we will be featured in the PA Great Outdoors Things To Do in PA magazine.

In other news, we recently received two citations from the House of Representatives. One was acknowledgement for Scripture Rocks Heritage Park and the other was for the Jefferson County Historical Society’s 50 years of service. Thank you to Representative Dush and Senator Scarnati for making that possible.

Membership Matters

We cannot say thank you enough to each and every member. It is your continued support that enables us to operate the Jefferson County History Center, preserve and exhibit the collections, and create new publications about our regional history.

In the spirit of our 50th anniversary, the History Center has a mission for all of its members. We ask that each member brings in a new member!

Membership in the Jefferson County Historical Society offers an opportunity to meet with others interested in Jefferson County history. Memberships are renewable annually and along with your renewal, know that you are contributing towards the preservation of our past.

Your 2017 membership will help us open and maintain new exhibits, host exciting events, and continue to develop Scripture Rocks Heritage Park.

Whether you have been a member for years or you are new to the organization, please consider becoming a Life Member during 2017. Not only will you receive a free gift upon signing up, but we also plan to hold a special event for life members this year.

JCHC Board of Directors

President

Eric Armstrong-2018
earmst@windstream.net

Vice-President

Larry Anthony-2017

Treasurer

Vickie Storey-2019

Secretary

Jamie Barger-2017

Randy Bartley-2019

Jon Noonan - 2018

Jamie Popson-2019

Ray Puller-2018

Amy Salsgiver-2019

Pat Steele - 2017

Jessica Weible-2018

Tracy Zents-2017

STAFF

Kenneth Burkett

Executive Director

kburkett-jchc@windstream.net

Carole Briggs, Curator

cbriggs-jchc@windstream.net

Alyssa Snyder, Graduate Assist.

asnyder-jchc@windstream.net

Kat Lyons, Research

jchc@windstream.net

PATHSTONES

Peggy Baughman, Shop

Janet Buchheit

Scripture Rocks Park Manager

Kris Scott, Database Projects

Fay Williams, Shop

Beverly Yeany, Shop

VOLUNTEERS

Jack Burkett

Austin Fields

Tom Glover

Ray Hannold

Carol Hollobaugh

Bob Hughes

Bill McCracken

Harry Neuhard

Faye Noonan

Sandy Noonan

Art Schreckengost

Jo Schreckengost

Judy Shirley

Jack Thiessen

Tanya Mulneix

Upcoming Events

12 TH ANNUAL ANTIQUÉ FIREARMS & INDIAN ARTIFACT SHOW

**SATURDAY
SEPTEMBER 2, 2017
9:00 A.M. - 4:00 P.M.**

**JEFFERSON COUNTY
FAIRGROUNDS
RT. 28
1/4 MILE NORTH OF PA
INTERSTATE 80, EXIT 81**

**ANTIQUÉ FIREARMS THROUGH 1898
PREHISTOIC AND HISTORIC ARTIFACTS
VENDORS & EXHIBITORS**

IDENTIFICATION, FLINT KNAPPING, PRIMITIVE GAMES



RAFFLE FOR A 50 CAL. MUZZLELOADER IN THE STYLE OF
JEFFERSON CO. GUNSMITH SOLOMON HARRIGER BY RON LUCKENBILL

ADMISSION: ADULTS - \$7.00 CHILDREN UNDER 16 - FREE

FOR TABLE RESERVATIONS OR INFORMATION: EMAIL: kburkett-jchc@windstream.net
Tele: (814) 849-0077 OR VISIT WWW.JCHCONLINE.ORG



BENEFITS THE JEFFERSON COUNTY HISTORICAL SOCIETY AND
NORTHFORK CHAPTER 29, SOCIETY FOR PENNSYLVANIA ARCHAEOLOGY



Upcoming Show

Join the Jefferson County History Center and North Fork Chapter 29 for the 12th Annual Antique Firearms and Indian Artifact Show. There will be people from all across the state exhibiting and selling antique firearms and prehistoric and historic artifacts.

In addition to the firearms and artifacts, there will be primitive games to play, flint knapping demonstrations, and artifact identification. There will also be a raffle for a 50 caliber muzzleloader by Ron Luckenbill or \$1,000 cash and a second raffle for \$1,000 worth of Pennsylvania lottery tickets.

For table reservations or additional information, contact Ken Burkett at kburkett-jchc@windstream.net or call 814-849-0077.

“Go Away Dixie Gillian”

See how radio was produced during the golden era when Little Orphan Annie and The Shadow thrilled millions. Join us for two shows during the Laurel Festival in the famous, newly renovated Columbia Theater on Main Street in Historic Brookville.

“Go Away Dixie Gillian” is an episode from the “Pat Novak for Hire” radio series, a detective show in the best tradition of film noir. Intentionally written to poke fun at the genre, the original program featured Jack Webb and Raymond Burr. The production includes classic radio ads, singers, and a newscast!

To reserve your seat, pick up a ticket at the History Center or call at 814-849-0077. Tickets will be sold at the door if seats are still available.

LIVE from Brookville's Columbia Theater

“Go Away Dixie Gillian”

a production of a classic radio program, “Pat Novak for Hire”

When:

8 p.m. Friday, June 23

6 p.m. Saturday, June 24

Where:

The Columbia Theater
150 Main St. Brookville, PA

Admission:

\$10 per person



Reserve your seats by purchasing tickets at the Jefferson County History Center on Main St. in Brookville or by calling 849-0077. Tickets will be sold at the door until theater is full.

All proceeds benefit the Jefferson County History Center

Upcoming Events

Scripture Rocks Heritage Park **Weekly Programs**

Every Sunday at 2 p.m. starting on May 28
at Scripture Rocks Heritage Park

Topics:

- Douglas Stahlman:** Why He Carved His Legacy In Stone
- Digging Deeper:** Uncovering the Park's Past Through Archeology
- Birding on the Rocks:** Join a Birdwatching Session at the Park
- Older Than Dirt:** Exploring the Geologic History of the Park
- Family Day:** Bring Your Kids for a Fun and Educational Day at the Park

Program Schedule:

5/28-Stahlman	7/30-Birds
6/4-Archeology	8/6-Archeology
6/11-Birds	8/13-Geology
6/18-Geology	8/20-Stahlman
6/25-Stahlman	8/27-Family Day
7/2-Archeology	9/3-Archeology
7/9-Family Day	9/10-Geology
7/16-Geology	9/17-Stahlman
7/23-Stahlman	9/24-Birds

The Jefferson County Historical Society will be hosting weekly programs every Sunday at 2 pm at Scripture Rocks Heritage Park. The park is located on Route 28, 1/8 mile south of I-80 exit 81 at 560 PA 28, in Brookville, PA.

The purpose of these programs is to enhance the knowledge of the visitors and community about the geology, archeology, and animals of the park

Jefferson County Historical Society's **Member Appreciation Day**

Sunday, July 23 at Scripture Rocks Heritage Park

Schedule

2 p.m.—Walking Tour

Special motorized tours through the park will be provided for those with difficulty walking. If you need the motorized tour, please check the GOLF CART box on the RSVP form.

4 p.m.—Luncheon catered by Plyler's Buffet

Following the luncheon will be the pavilion dedication of Arian Kelso's Eagle Scout project in honor of E.M. "Jack" Parker Jr.

\$12 per person

Menu

Pulled Pork Sandwiches, BBQ Chicken, Pasta Salad, Macaroni Salad, Coleslaw, Rolls, Desserts, and Beverages

and to learn more about the man behind the carvings far beyond what the panels tell you.

Please expect to walk 2 miles and dress appropriately for the weather. Allow 2 hours for the tour and bring water to take with you on the trail. The program is free, but we always accept donations.

MEMBER APPRECIATION DAY RSVP

Please RSVP by July 15

\$12 per person

NAME _____

PHONE _____

ATTENDING _____ **GOLF CART**

Return with your check
Payable To:
JCHS
P. O. Box 51
Brookville, PA 15825
Credit Card Reservations
Call 849-0077

Announcements

Jefferson County Historical Society's

Writing Contest


The Jefferson County Historical Society is celebrating it's 50th anniversary this year! Our programs, exhibits, and books help preserve the past, but now we need your help to predict the future. Write an essay that vividly describes what Jefferson County will be like 50 years from now in the year 2067! This is a chance for you to be creative and demonstrate your knowledge of the county.

Requirements for Entries:

- At least 500 words, 750 maximum
- Must be typed and double spaced
- Include your name and phone number

First place winner will receive an invitation to the annual dinner and membership meeting in October. They will also have their submission placed in the Jefferson County History Center's time capsule, which will be opened in the year 2067.

*All entries are due on
Friday, September 29*



Writing Contest

The Jefferson County Historical Society celebrates their 50th anniversary this year. Our programs, exhibits, and books help show you what the past looked like, but now we are asking you to help give us a glimpse into the future.

Write an essay that vividly describes what you think the future of Jefferson County will look like in fifty years, the year 2067. What will change? What will stay the same? Consider the businesses, schools, family life and community events in the county. This is an opportunity for you to demonstrate knowledge of your community.

The first prize winner will have their essay placed in our 50th Anniversary Time Capsule, which will be sealed for another 50 years. Other prizes will be awarded to other winning entries.

Volunteers Needed

The Jefferson County History Center loves sharing the past with you through the Bowdish Model Railroad, but we need your help! We are looking for volunteers to help run the railroad on the last Saturday of every month.

Even if you don't know a thing about model trains or O scale building but you still want to learn and volunteer, our team is full of knowledgeable individuals that will mentor you. All we ask is that you have a positive attitude.

If you want to help us keep that past alive by climbing aboard the Bowdish Model Railroad team, call JCHC at 814-849-0077.



Bowdish Volunteers Needed

Help preserve the past by climbing aboard
the Bowdish Model Railroad team

We Need Volunteers That:

- Want to learn how to build O scale buildings and animations
- Are available on the last Saturday of each month
- Enjoy working with and meet new individuals

We Offer:

- A fun and educational environment
- Knowledgeable mentors
- A unique experience

If you are interested in joining the team, please contact the
Jefferson County History Center at (814) 849-0077

volunteers 12 and under must be accompanied by an adult



The Scuttlebutt on Scripture Rocks

Exciting things are happening at Scripture Rocks Heritage Park! The picnic pavilion is nearing completion, we are putting additional picnic tables in, more benches are going to be placed throughout the park, an information kiosk is being added as well as two new interpretive panels near a rock shelter, and there will be weekly programs at the park.

Arien Kelso, an Eagle Scout, has been working hard on a pavilion for the past few months and the project is near completion. This pavilion will house picnic tables, making it ideal for parties, family reunions, or a picnic after a hike. The pavilion will be first-come-first-serve, however we are taking reservations. If you would like to reserve the pavilion for an event, contact the History Center at 814-849-0077.

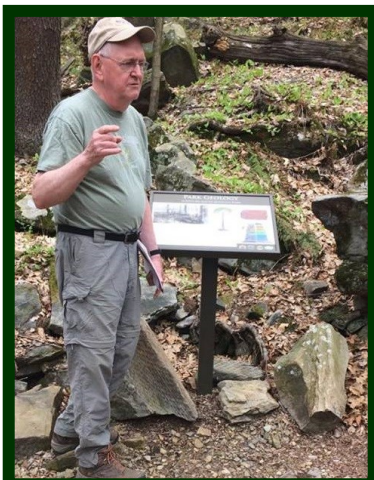


Due to the continued success and popularity of the park, it is necessary to add more tables and benches for the convenience of our visitors. We are placing three more picnic tables and four more benches throughout the park and are currently accepting donations of \$250 if you would like to sponsor a table or bench. If you decide to sponsor, there will be a name plaque placed on the item.

In conjunction with the pavilion, we are also in the process of building an informational kiosk at the head of the park trail. This kiosk will hold information of the upcoming events in the area via brochures and rack cards provided by Pennsylvania Great Outdoors. On nice days, it will also hold Scripture Rocks mementoes that will be available for purchase.

If you have visited the park in the past year, you may have noticed the

interpretive panels that are placed along the park trails that inform you of the different rocks and different environmental aspects of the park. We are adding two more panels that will showcase the recent archeology excavation of a prehistoric Indian rock shelter that is located in the park.



If you are interested in learning more about Scripture Rocks, there are weekly programs held at the park every Sunday starting at 2 pm throughout the summer. The program topics will include Douglas Stahlman, archaeology, geology, forestry, birds, and more. We will also have a Family Kids Day coming up! For the full program schedule, go to www.scripturerocks.com or visit our Facebook page.

Planning Programs for 2017– 2018?

If you or your organization are interested in scheduling a program with us, visit jchconline.org for more information about our many programs and speakers or call us at 814-849-0077.

Feeling Lucky?

We are selling tickets for the 2017 JCHC annual muzzleloader rifle raffle features your choice of a 50 caliber half-stock flint-lock made by master gunsmith, Ron Luckenbill in the style of Jefferson County gunsmith, Solomon Harriger (1829-1892) or \$1,000 cash. We also will be selling raffle tickets for a basket full of \$1,000 worth of scratch-off lottery tickets.



The drawings will be held on Saturday, September 2 at 4 pm during the 12th annual Antique Rifle and Indian Artifacts Show at the Jefferson County Fairgrounds.

Raffle tickets for both prizes are \$5 each or 5 for \$20.

We need volunteers to help sell tickets individually or with the History Center Board at the Hazen Flea Market. If you would like to help, call or email us for more information.



Bowdish Model Railroad Schedule

Saturday, June 24

Saturday, July 29

Saturday, August 26

Saturday, September 30

Saturday, October 28

JEFFERSON COUNTY ARCADIA POSTCARD BOOK

PRE-ORDER FORM

BOOKS ARE \$21.99 EACH

Return with your check
Payable To:
JCHS
P. O. Box 51
Brookville, PA 15825
Credit Card Reservations
Call 849-0077

NAME _____

ADDRESS _____

CITY _____ **ZIP** _____ **PHONE** _____

Curator's Corner

Carole A. Briggs

My legs ache and I slept like the proverbial log—I'm recuperating from teaching five classes of third-graders! When the elementary school decided to have third-graders change classes every hour and the History Center's meeting room became the office, our Hands-On-History program that we designed with teachers and have coordinated since 1993 changed. I now do in one day what I used to do in two or three and I do it in a new location.

So what does a curator with thirty years of classroom experience do with a class of 25 to 30 third-graders? First, an introduction of who I am and what I do by comparing the curator's job to that curious monkey named George. Next come some rules; walk, inside voices, no food or drinks, and an explanation of our "Look! Please touch me only with your eyes" and "Please Touch Me" signs.

Then we move to the fun part of the Hands-on-History. Seated four to a table and wearing white curator's gloves (one of the best investments we ever made), we pass around some artifacts, listen to a question, discuss, reach consensus, and report to the class.

What is it? A lid? Seeds? Sand? What was it used for? Making a pie? Creating jewelry? Who made it or used it? A man? A middle-aged man? A middle-aged man who was a farmer? Who might have cooperated to make it or use it? The mom picked apples with the kids and dad drove the truck to the market to sell them. And finally, how might this artifact have changed over time?

A simple set of questions, but me oh my, how skillful they become as we move along. Interspersed with the questions are mini-lectures about accession numbers, how we use our senses to examine an artifact, how we measure straight things and curved things, and just exactly what is history—change over time of people, places, and events.



And then the grand finale—we imagine a time line and learn that maple sugar reminds us of the Native Americans who lived here long ago and knew how to make it; that a shingle may have been on the roof of that son of an Englishman Joseph Barnett, who built an inn in that place in the valley with the smokestack that they passed on their way to Pinecreek; that black American Fudgeon VanCamp brought apple seeds with him when he foolishly walked through the snow from the east; that the Scots-Irish brought their sheep and sheep shearing shears with them when they came from Northumberland County; that the Pennsylvania Dutch are really Germans, who love to eat doughnuts; that people with names beginning with Van came from Belgium to work in the glass plant; and that today we have people from many parts of the world living right here in Jefferson County.

And then the bell rings. And we do it all again. This year we have easily passed the 3,000 mark of students who have had fun with Hands-On-History. Wouldn't it be interesting to learn what they remember?



50th Anniversary

Kat Lyons

50TH Anniversary. Part II—“ The Present”

We left off in our last issue in 1997 with Jefferson County’s bicentennial, “ 200 years of Progress.” In that year, the Society hired John Herbst, former Heinz History Center director, as consultant for our future plans, who recommended a Main St. location.

Excitement grew in 1999 as JCHGS began anticipating the purchase of the Edelblute-Pearsall building, armed with a \$15,000 state grant and line of credit through the County Commissioners. In April 2000 the historic building was saved from being condemned by the Brookville Borough and became the Society’s new home when the deed was signed, providing a Main Street front. A Capital Campaign Committee was formed to raise more funds now needed for restoration.

At the 2001 annual meeting, Kathleen Sandt Taylor received the Society’s first Arthur Altman Award and Pat Steele received the first Kate Scott Pioneer History Award. We received our 1st PHC grant of \$10,000 to develop the planning stages for several exhibits including Living on the Land, which traces the development of the county. It began with the survey of 150 residents asking “The People of Jefferson County: Who Are We?”

From 2002-2003 the Society was awarded \$40,000 from the PA Development Commission for building restoration, and the Lumber Heritage Region (LHR) assisted with a grant through the state and designated the new museum as the Western Gateway of the LHR promoting heritage tourism in the region.

The JCHS was still operating out of Brady-Craig house on Jefferson St. The Capital Campaign was at \$430,000 of which \$300,000 came from private and corporate donations. Architect William Snyder was hired to oversee Edelblute building renovations and exhibit designer John Strawbridge was engaged to advise on window displays and gallery designs. Bowdish volunteers “ Worked on the Railroad” non-stop, creating a new layout with miniature replicas of Jefferson county buildings to augment the original Charles Bowdish models owned by JCHC and those on loan from Carnegie Science Center..

The Jefferson County History Center formally opened on March 26, 2004, during the County’s 200th Anniversary, featuring the Bowdish Miniature Railroad, new Gift Shop and Research Library. The four front window exhibits showcased “ Lumbering, Bowdish, WWII and Agriculture.” Other exhibits were Shirley Van Atta’s Native American watercolor portraits and a photo exhibit “ The People of Jefferson County.” The Society played a key role in the bicentennial, publishing a new history: *Jefferson County, Pennsylvania: An Illustrated History*, compiled by authors from all four historical societies within the county. The Brady Craig Museum and Margaret Johnson Archives were now converted to collections storage.

In 2005, the Society shortened our formal name to the Jefferson County Historical Society (JCHS). “ Johnny Comes Marching Home” was the first large exhibit in the Parker Gallery. Our first “ moving day” was when the Twyford replica built by Bill McCracken found a new home in the Parker Gallery, along with the Brookville Murphy buggy. A National Endowment for the Humanities grant matched by two local businesses created an endowment at Clarion University for an annual Graduate Student Internship at the JCHC.

In 2006 the first annual Antique Rifles and Indian Artifact Show was held at the Jefferson County Fairgrounds as a major fundraiser that continues today.

50th Anniversary

In 2007, the Native American Lifeways in Western PA opened, created by a collaboration of regional archaeologists showcasing Native American Artifacts on loan from the State Museum and private collections. This exhibit received both state and national awards. In fall, JCHS initiated the 1st Annual Giving Campaign to help replace lost state operational funding which was—AND EVEN MORE SO NOW—crucial to operations and keeping us a truly first class history center. Thank You Donors !

In 2008 Ken Burkett became Executive Director and the construction of the Living on the Land Exhibit went into full swing and opened in the fall, and subsequently received both state and national awards. Todd Pfannestiel provided an exceptional re-enactment as Franklin D. Roosevelt for the public and all area high schools through a special PHMC Grant.

2009-2010 were busy years, with a PHMC marker dedication of Earle Sandt, “ Brookville’s Birdman,” a pioneer aviator. Bill McCracken donated his Richardsville miniature 1878 diorama and “ Save America’s Treasures” grant helped complete building restoration and provided stairlifts to all floors. The unwanted news in 2010 was that our annual PHMC funding was cut from the state budget.

Beginning in 2011 a total of 8 Civil War exhibits opened during the next 5 years with the JCHS partnering with Pennsylvania’s 150th Anniversary of the Civil War including PA 150th Civil War Roadshow at the fairgrounds and several traveling exhibits. Museum exhibits included “Drumbeat to War,” “ Journeys” which highlighted the Underground Railroad and explored the county’s black history; 105th PA Volunteers, “The Cost of War,” “Kate Scott,” “Through Their Eyes” (photos of our county’s Civil War veterans) and “Reunions and Remembrances.”

A Keystone Historic Preservation Grant from PHMC in 2011 made possible the GIS mapping of the Scripture Rocks at Port Barnett by Quemahoning LLC, completing an ongoing survey by the North Fork Chapter 29 of the Society of Pennsylvania Archaeology and the JCHS.

From 2012-2014, projects included informational panels in the Brookville Downtown National Historic District, construction of the David Leach Rhododendron garden, and the American Towns at War documentary began. The 1st issue of the Jeffersonian Journal was published, and agreements for Scripture Rocks Heritage Park development were finalized. PHMC was finally able to restore partial annual funding.

Scripture Rocks: Why Douglas Stahlman Carved His Legacy in Stone by Brian Fritz and Ken Burkett was published and received a prestigious national history award. 2015 began with our 1st Military Collectibles Show and saw the rollouts and capital campaign initiated for Scripture Rocks Heritage Park.

In 2016, we celebrated local WWII history with a photo/biography exhibit and gallery of U.S. and German armaments. We portrayed our local gunsmiths and violin makers of the 1800’s and showcased a toy exhibit spanning 1940’s-1970’s. The highlight of the year was the grand opening of Scripture Rocks Heritage Park occurred in June, garnering multiple state and national awards and is a popular unique tourist destination.

This year we also celebrate the 50th Anniversary of the founding of JCHS with our 50th exhibit in the skylight gallery and front window, along with 50th Anniversary member events, some to be announced soon.



The Jefferson County
Historical Society
172-176 Main St.
P.O. Box 51
Brookville, PA 15825

(814) 849-0077
jchc@windstream.net

<http://jchconline.org>

Museum Hours

Tues. - Sat.
11 a.m. - 4 p.m.

Closed Sundays,
Mondays, and holidays

We typically close when
our schools close due
to weather, and urge
you to phone before
traveling any distance

Exhibit Admission Fees

JCHS Members - Free

Non-members:

Individual - \$ 5

Household - \$ 7

Students - \$1

Genealogy

Contracted Research
\$25 /hr. (1 hr. minimum)

In-House Assisted
Research
\$25/hr. (after 1st 1/2hr.)

If you would like to
receive our
E-newsletter
and announcements
of events and
activities at the JCHC

SIGN UP AT

jchconline.org

NONPROFIT ORG.
U.S.POSTAGE paid
Permit No. 11
Falls Creek, PA 15840

Jefferson County Historical Society Annual Membership Application

Individual \$25/12 months

Family (Household) \$35/12 months

Name _____

Mailing Address _____

City _____ State _____ Zip _____

Phone _____ Email _____

Credit Card Type _____ Card # _____

Our Mission

Our purpose is to engage people of all ages in the history of Jefferson County. We collect and care for relevant objects, images and documents and invite county residents and visitors to research our materials, interact with our exhibits, take part in our programs and read our publications, in order to encourage an understanding of our past and present and a vision for the future.