



**In This Issue**

Events Calendar	2
Authors Wanted	2
Building & Grounds	2
PHMC Program	2
Brian Leach Visits	2
ANF Projects	3
What Did You Learn	4
Collections Connections	5
105th PA Wildcats	6
Curators' Corner	7
Col. Amor A. McKnight	7
Cemetery Torchlight	8
Laurel Festival	8
Night of the Living Dead	8
Fall Bus Trip	9
Antique Firearms Show	10
Annual Rifle Raffle	11

**From the Director**

Managing an organization that depends on admissions, donations, events income grants, and shop sales is very challenging. The JCHC Board is always working on projects and events that help provide sustainable income to cover operational costs.

Recently our members enjoyed our well-attended bus trips. We are currently planning four that will include a museum trip during the winter, our normal Casino trip in March, a two day event in early summer and a one day excursion to a historical location each fall. These along with our programs such as the annual rifle show, cemetery tours, house tours and other programs all take time away from running the museum but are a vital part of our public education mission and a significant part of the annual income.



Recent group at the Gettysburg Pa Memorial  
Photo by Joe Bonfardine

Our special projects such as the Archaeological Survey contracts which we have been able to conduct annually with the Allegheny National Forest have been a unique partnership that helps them conduct resource evaluation and management and brings us some needed funding.

Recently we were notified about the possibility of losing our Pathstones employees due to continued federal funding cutbacks and changes. So far that hasn't happened and we certainly hope that our relationship continues which provides the JCHC. This program provides five funded part time employees over the age of 55 as part of a job retraining program. They are vital to the museum operation from helping to manage the gift shop, completing data entry, working with collections, helping patrons with genealogy research and completing a lot of the daily maintenance, cleaning and repair projects that are needed to keep all three of our buildings operational and collections secure. Without these employees the daily operations of such a large facility would indeed be hard to manage.



The JCHC recently installed 3 new historical signs at the main office of the Allegheny National Forest in Marienville

The Jeffersonian is published in February, June, and October  
Submissions are always welcome and should be directed to  
Ken Burkett c/o the History Center

**2013 Events Calendar****June**

Sat., June 2

**Bowdish Railroad 12 –3 pm****Cemetery Torchlight Tour****July**

Sat., July 6

**Bowdish Railroad 12 –3 pm****August**

Sat., August 3

**Bowdish Railroad 12 –3 pm**

Sat., Aug. 31 9 am - 4 pm

**Antique Rifles and Indian****Artifact Show****Jefferson County****Fairgrounds****September**

Sat., June 2

**Bowdish Railroad 12 –3 pm**

Sat. Sept. 14

**Pittsburgh on the River****Tickets Available NOW****October**

Sat., June 2

**Bowdish Railroad 12 –3 pm****JCHC Annual Dinner****Oct. 19, 2013****Heritage House****Mark YOUR  
Calendar NOW****JCHC Annual Dinner  
and Awards Ceremony****October 19, 2013*****WANTED* - Authors for JCHC Journal**

Would you like to be an author? Beginning this fall we are plan to creating an annual journal publication to be included as part of your JCHC membership benefits. Each issue will be a compilation of articles based on current research, genealogy, photography, local stories and legends, people, communities or other topics that relate to the history of Jefferson County.

We are currently inviting your submissions for the first issue or future issues. Submission deadline is August 31st. For more information or publication guidelines please contact Ken Burkett at the JCHC or at [jchconline.org](http://jchconline.org).

**Building and Grounds**

The Building and Grounds committee was extremely busy with projects this spring . With the help of Pathstones worker Doug Davis we repaired the walkway and steps, complete painting of the porch, install eleven interior storm windows and create additional cedar lined storage space for our clothing collection at the Brady Craig house. At the History Center we will soon repaint the patio walls and ramp and entrance deck and several interior galleries along with numerous other small maintenance and repair projects throughout all of our buildings. Later this summer if funding is available there are plans to tar and chip the rear parking lot.

**PHMC Program at the JCHC**

The Jefferson County History Center in partnership with the Pennsylvania State Archives recently co-sponsored an **Archives Without Tears** seminar here in Brookville. Attended by 25 museum and collections staff from various institutions across western Pennsylvania. The program provided by Josh Stahlman, Joanne Gerdner and Joe Burns offered practical advice, sample forms, policies and basic practices used for collecting, preserving and assisting researchers with an organizations records and documents collection.

**Brian Leach Visits**

Brian Leach son of Dr. David Leach recently visited the History Center on a return trip to Brookville to help review our plans for the Leach Rhododendron Exhibit.

Numerous donations have been for the purchase of plants which we will begin planting in June. Over the summer months interpretative signs will be developed describing Mr. Leach's world famous work and individual plant markers. Donations for the project are still being accepted with those donating over \$50 to be acknowledged as a donor or in memorial to or in memory of someone on the permanent signage.

**Check out the latest updates and more on our web site at  
[jchconline.org](http://jchconline.org)**

## Sand Plant Mapping Project - Brian Fritz

Much of our industrial heritage is rooted in the forests, hills, and streams of our rural landscapes. Evidence of this industrial legacy can be found throughout the Lumber Heritage Region. One such example is a place known to the residents of Forest County as the "sand plant". Hidden along a steep hillside in Spring Creek Valley are the ruins of a sand making operation formally known as the Standard Silicon Spring Creek Glass Sand Works. In this remote location, the Standard Silicon Company of Ridgeway, Pennsylvania quarried silica rich sandstone from pits along the top of the valley slopes. The quarried stone was hauled down a steep incline plain to a very large crushing facility located along the valley bottom. In the 190 foot long facility the quarried stone was reduced to nearly pure silica sand. The sand was washed, dried, and shipped to market over the Tionesta Valley Railway. Standard Silicon's customers were the numerous small glass works located in small towns throughout the region. The sand was the principal raw ingredient for making glass products of all kinds. Standard Silicon operated the sand works from 1914 to 1926.

The old sand works is today part of the Allegheny National Forest (ANF) and managed by the USDA Forest Service. The Forest Service's primary mission is to manage the vast timber resources within the ANF, but its mission also includes the development of recreational opportunities and the protection of heritage resources. One recreational opportunity is an extensive network of horse trails that were constructed within the Spring Creek Valley. This horse trail passes through the quarry pits and near the sand works. As part of the horse trail construction the Forest Service initiated the Standard Silicon Spring Creek Glass Sand Works Archaeological Mapping Project as part of an effort to protect and enhance cultural resources located along the Spring Creek Horse Trail System. The project was organized as a cooperative effort between the Forest Service, Jefferson County Historical Society (JCHS), and Quemahoning LLC.

The field project was coordinated by Brian Fritz, Principal Investigator of Quemahoning LLC. Dense patches of brush were removed to expose the concrete foundations and piers of the sand works. The ruins were photographed and precisely mapped using electronic surveying equipment. Thirteen quarry pits were mapped, including a network of narrow gage railroad trams that connected the quarry pits to the incline plane and sand works. Also documented within the quarry is a powder magazine where dynamite was stored.

This powder magazine is a small room that was literally carved into the center of a house-sized rock. Evidence of the different kinds of explosives and drilling machines can be seen on the quarry walls which preserved a record of the quarry operation's evolution and development. The field mapping was completed in the fall of 2012. The project is in its final stages of historic background research and report writing which includes a detailed description and history of the sand works. The project will conclude with the placement along the horse trail of three interpretive signs that tell the story of the sand works and explain the importance of the region's contribution to our industrial heritage.



Concrete piers that supported the machinery and sand storage bins inside the 190 foot long and 40 foot wide sand

### JCHC Board of Directors

Dick Beck -2014

President

Melanie Darrin -2014

Vice-President

Jon Noonan - 2015

Treasurer

Pat Steele - 2014

Secretary

Eric Armstrong-2015

Jeff Carrier - 2013

Diana Farley - 2013

Tom Glover - 2015

Carol Hollobaugh - 2013

Ed Kaufman - 2015

Joni Kerr - 2013

Wayne Kocher - 2014

### STAFF

Kenneth Burkett

Executive Director

kburkett-jchc@windstream.net

Carole Briggs

Curator

cbriggs-jchc@windstream.net

Graduate Assistant

Cara Stockdale

cstockdale-jchc@windsteam.net

### PATHSTONES

Research

Mark Lussky

jchc@windstream.net

Helen Lockard

Judith Shirley

Alice Miller

Doug Davis

### VOLUNTEERS

Quinton Boroi

Jack Burkett

Andrew Byerly

Herman Eisenga

Ray Hannold

Bill McCracken

George Miller

Harry Neuhard

Sandy Noonan

Art Schreckengost

Jo Schreckengost

Sandy Simchak

Pat Steele



## And What Did You Learn Today ?

Carole Briggs

As the History Center Curator and Educator, I learned a lot of what I know while visiting museums: how Chippewa women carried their babies, the size of a woolly mammoth, and what it's like to descend into a coal mine. Good museums are good teachers.

We want the History Center to be a good teacher to people of all ages, but particularly to students. Our Hands-On-History program for fourth-graders began many years ago when we worked with teachers to align a museum visit with Pennsylvania history. We've worked with fifth graders learning about the Underground Railroad, and high school students examining the Civil War.

Recently advanced placement students from Brockway spent a day here viewing the exhibits from the perspective of the twelve themes they'd been studying: American Diversity, American Identity, Culture, Demographic Changes, Economic Changes, Environment, Globalization, Politics and Citizenship, Reform, Religion, Slavery and Its Legacies in North America, War and Diplomacy. For extra credit, they could write a review.

After the Brockway AP day last week, their teacher offered extra credit for feedback and shared them with me. Dominique Martina wrote that the museum was organized and covered some topics quite well. However, she thought there could be more about women. "As a student, AP classes talk about women and woman's suffrage a lot. Women were an important part of history all around the world and definitely in Jefferson County." Hanna Levinson noted "I believe that your museum did an amazing job showing how much diversity, or the lack there of, and American identity there was in Jefferson County. We saw that Americans in Jefferson County were just like Americans everywhere else. Your museum also did a very good job at showing us culture and demographic changes over the years. By showing things from as early as the Native American times all the way up to planes and automobiles. We were shown population growth, changing climate, and birth records for Jefferson County over the years."

After reading a new book *Teaching History with Museums*, I came away with the knowledge that pre- and post-visit experiences are very important. The critique's of Dominique and Hanna are evidence of a good post-visit experience.

We're working hard to get teachers involved in those pre- and post-visit experiences. This May we've offered teachers and their families free admission so they can look around. We've Emailed back and forth prior to a visit, so that time spent here is not simply "time off from school." And we've had a pre-visit tour with two kindergarten teachers. We talked about how the visit will support Pennsylvania's Education Standards.

So if you meet a rising first-grader this summer, you might ask them what an artifact is. And when they tell you, they just might describe a photograph and document, too!



**When Brockway students recently visited the History Center, local re-enactor Randon Bartley was there to dress one of the students in the clothing of a typical union recruit**

**Contact the JCHC for information on how your school can arrange a visit**

## Collections Connections

Artifacts, photographs, documents and books help us show the stories of the people, places, and events of our country. Those pictured here helped us show the story of Nathaniel Greene Edelblute, the man who built seventy-five percent of the building now known as the Jefferson County History Center.

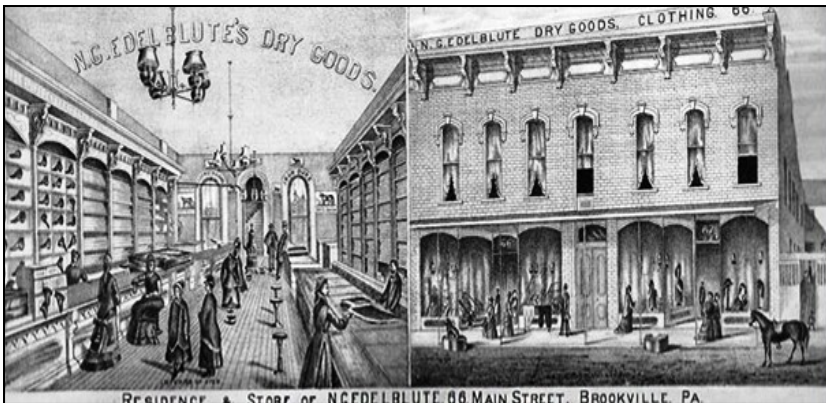
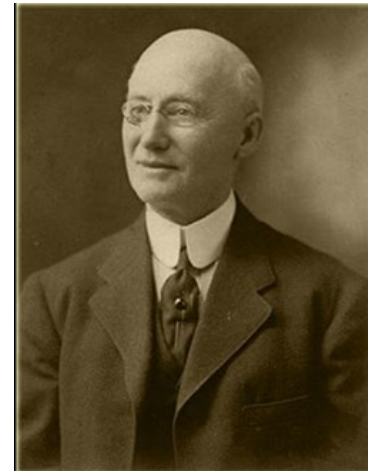


### A Document

Sometime after 1938, someone researched and prepared a genealogy chart of the Edelblute family that measures 42" x 120". It begins with the birth of Christian Edelblut in the 11th century and ends with Kay Edelblute who was born in 1938 in Dubois.

### A Photograph

Nathaniel Greene Edelblute arrived in Clarion with his parents, three sisters and three brothers in 1847. When his parents moved to Kansas in 1855, he was clerking in Brookville and love with Rosetta Frank. They married and their first child, John, was born in 1859. Three more children were born by the time Nathan bought a small building on this property.



### A Book

Nathan's growing business and his racing trotters made possible additions on the front for his sister-in-law's millinery shop and west for his goods store. The family lived on the second floor. Caldwell's Atlas (1877) included sketches of the façade and interior. Today N. G. Edelblute Dry Goods and Clothing is the History Center's main Gallery, LIVING ON THE LAND.

### An Artifact

The society purchased Nathan's building in 2001. Heirs had removed much of the contents, but some things remained. One artifact was a small sculpture created by John Rogers (1829-1904).





## New Exhibits

### 105th Pennsylvania Volunteers “Wildcat Regiment”

Now open the 105th Pennsylvania Volunteers exhibit features a selection of over 100 photographs, portraits, documents, artifacts and memorabilia identified to individuals from this regiment, and includes a selection of 19th century musical instruments and select items belonging to the original regimental brass band.

The 105th Regiment was raised mainly in the counties of Jefferson, Clarion and Clearfield but also had a company incorporated from Westmoreland. It mustered at Pittsburgh in September 1861 for a three year term. Among the early recruits was future United States Congressman Albert. C. Thompson.



Kearny Cross

The 105th distinguished itself during its first action at Fair Oaks setting a precedent for the regiment as hard fighters. At the Battle of Chancellorsville in May 1863, the troops were warmly engaged, and 21 men were awarded the division's Kearny Medal of Honor. At the Battle of Gettysburg, the regiment lost many men, and, after the return to Virginia, engagements followed at Auburn, Kelly's Ford, and Locust Grove in the Mine Run campaign late in November. At the end of that campaign, the regiment returned to winter camp at Brandy Station and on December 28, 1863, nearly the entire regiment re-enlisted.



**105<sup>th</sup> Pennsylvania  
Wildcat Regiment**

**June, 2013 - April, 2014**

**At the Jefferson County History Center**  
172 Main Street, Brookville, PA  
Jchconline.org

The regiment fought at the battles of the Wilderness and Spotsylvania in May 1864 and then moved to Petersburg with the army, where it took part in the operations of the X Corps in August and the movements upon the Wilmington and Weldon Railroad in October and December. On September 5, the remainder of the 63rd Pennsylvania was added to the depleted 105th. On February 20, 1865, the 105th also absorbed Company C of the 2nd United States Sharpshooters, and in March 1865, about 300 new recruits were received. At Sailor's Creek, the regiment was actively engaged, after which it returned to Alexandria. It participated in the Grand Review at Washington and was mustered out in that city on July 11, 1865.

Out of a total enrollment of 2,040, the regiment lost 309 men by death from wounds or disease, and 199 soldiers were reported as missing.

First Lieutenant Alexander H. Mitchell of Company A, received the units only Medal of Honor at Spotsylvania, Va., 12 May 1864 for the capture of flag of 18th North Carolina Infantry (C.S.A.), in a personal encounter with the color bearer.

## Curator's Corner

### McKnight Portrait Restoration

Joanne Garrett noted that “If he were alive today, I think I’d be interested!” Her comment was directed at Amor McKnight, a dashing and very handsome fellow from Jefferson County.

Like many Civil War soldiers, Colonel Amor Archer McKnight had his image recorded by a photographer. It was from such an image that painter John Kahill Coxson painted the portrait that was presented to the Jefferson County Historical and Genealogical Society when it first formed by William and Mary McKnight. William was a descendent of Amor’s brother, county historian William J. McKnight.

Between 1971 and 2004 the painting hung on an inside wall of Brady Craig House on Jefferson Street. It was moved to the Adda Edelblute Pearsall Parlor in the History Center in 2004. Time had taken its toll on the portrait.

When we began to think of our series of Civil War exhibits, we knew the Colonel should be exhibited with the 105<sup>th</sup> PA Regiment, so we invited conservator Joanne Garrett, Punxsutawney, to provide restoration recommendations to us and solicited funding for the project.

Last fall, the Colonel moved to Joanne’s studio where she removed him from the frame and canvas stretcher. She discovered that Coxson had used a combination of Pink Plaster of Paris, fine black sandy grit mixed with an organic animal-based blue to adhere the painting to the stretcher. This was an unstable procedure that caused the painting to pull away and buckle, a process that caused surface cracking.

Joanne cleaned the portrait, removing dirt and varnish, and the Colonel’s glowing countenance gradually emerged. His sickly blue gray pallor warmed. After the final cleaning, she protected the portrait with two coats of matt finish acrylic varnish. Reinserting the canvas into the frame required the advice of a carpenter and a new inner frame of gold leaf. In addition, Joanne used plexiglass on the reverse, allowing us to view the information about Coxson.

The Colonel returned to the History Center in early May and is now part of the 105<sup>th</sup> PA Regiment exhibit. He is indeed handsome! We are grateful to Molly Hutchins, Mary Coyle, Andrew and John Briggs, and Gretchen Briggs Dinger for their support in this conservation project.



Joanne with McKnight Portrait after Restoration

### Colonel Amor A. McKnight

Amor served as Captain of the Brookville Rifles at the beginning of the war and responded with the company at the first call to arms with the 8th Pennsylvania during an initial 90 days enlistment. Upon returning to Brookville he immediately organized the 105th Pennsylvania which was mustered in Pittsburgh on September 9, 1861 for three years service.

McKnight spent the winter of 1861 training the regiment and led the unit at its first engagement at “Fair Oaks” Virginia in 1862. Soon thereafter he was stricken by fever and was given a furlough to return home for two months.

After returning, he led the regiment in every battle until killed in action at age 31 while leading a charge at Chancellorsville, May 3, 1863. Because of heavy fire by the rebels, the regiment was unable to remove his body from the field and he remains today in an unmarked grave somewhere on the battlefield.





## Upcoming Events

### Cemetery Torchlight Tours Highlight Local Civil War History

Torchlight Cemetery Tours sponsored by the JCHC are again returning to the Brookville Laurel Festival this year. The event has moved to the New Brookville Cemetery on Cemetery Road near the Brookville High School. The first tour will begin at 7:00 pm and groups will continue to depart until 9:30 pm. on Thursday, June 20th. (Friday June 21st will be a rain date in case of cancellation by weather on the 20th).

The tour will include eight torchlight graveside visits where re-enactors will share the Civil War stories of veterans and their families.

Tickets will be sold only at the event location and are \$10 for adults with children age 12 and under admitted free.



### Laurel Festival

The 2013 Brookville Laurel Festival theme is: A Civil War Anniversary; 150 years. Friday June 21st is the Brookville Sidewalk Sale. Be sure to stop by the History Center for sales items and to visit the Bowditch Model Railroad from 12 - 3 pm.

The Jefferson County History Center has been designated to receive the 2013 Laurel Award and also serve as Grand Marshall in the Laurel Parade. For a complete schedule of the 2013 Laurel Festival Events and activities visit the Brookville Chamber website at [brookvillechamber.com](http://brookvillechamber.com)

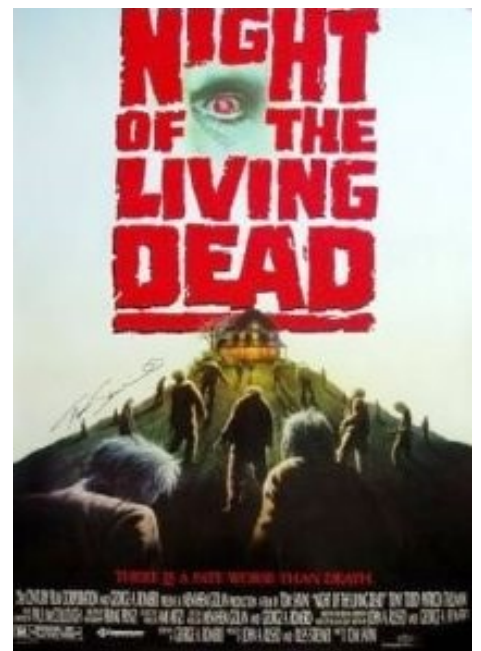
### “Night of the Living Dead“ Coming to Brookville

**MARK YOUR CALENDARS For:** Saturday evening November 2nd when the Jefferson County History Center will present “Night of the Living Dead” at the Columbia Theatre in Brookville. This unique fun filled evening will include a showing of the original 1968 movie *Night of the Living Dead*. This film directed by George Romero and filmed near Pittsburgh started the Zombie craze which emerged in popular culture during the past decade through television, movies and video games.

Attendees will also have an exclusive opportunity to personally meet and visit with some of the films original writers and actors who will also be available for autographs and photo opportunities.

There will be awards for best dressed zombies attending the event in several categories.

Tickets for this limited seating event go on sale at the JCHC on Saturday, September 7th and are \$15 each so get your best walking dead costume out and plan to join us for this fun filled event.





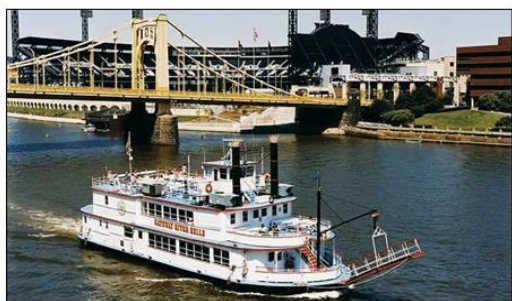
## Fall Bus Trip

# PITTSBURGH ON THE RIVER

## WITH THE JEFFERSON COUNTY HISTORY CENTER

**SATURDAY, SEPTEMBER 14, 2013**

**Depart 9:00 am**



Join us for a picnic luncheon scenic cruise aboard the Gateway Clipper for a great view of Pittsburgh from on the water. Enjoy a tasty lunch buffet inside the climate controlled vessel and then head outside for great views of "America's Most Livable City" on one of the open air decks.

### Lunch Menu

*Home Style Fried Chicken Breast Sandwich, Buttered Corn on the Cobb, Tri Colored Nacho's with Nacho Cheese Sauce, Salsa, Sour Cream and Jalapeños, Baked Potato Bar with Shredded Cheddar, Bacon, Diced Ham, Broccoli Florets, Sour Cream, Diced Onion, and Butter, Garden Fresh Salad Greens served with your choice, of Buttermilk Ranch Dressing or our House Italian Dressing, Strawberry Short Cake, Coffee & Hot Tea*

After the cruise you will have 3 hours on your own to take in the sights and shopping at Station Square or walk to the nearby Monongahela Incline built by John Endres in 1870 for a scenic trip to the top of Mount Washington. Bus boards at 5:00 pm for return to Brookville.

**\$80 per person includes Bus and Gateway Clipper Lunch Cruise**



### Pittsburgh On the River

September 14, 2013

Please Reserve \_\_\_\_\_ Tickets @ \$80.00 Each      Total Enclosed \$ \_\_\_\_\_

Name's \_\_\_\_\_

Address \_\_\_\_\_

City \_\_\_\_\_ Zip \_\_\_\_\_

Phone \_\_\_\_\_

**Return with your check by  
August 31, 2013**

**Payable To: JCHC  
P. O. Box 51  
Brookville, PA 15825**

**Credit Cards Accepted  
Please Call (814) 849-0077**

## 8th Annual Antique Firearms Show

It's only a few more weeks until the 8th annual JCHC Antique Firearms and Indian Artifact Show at the Jefferson County Fairgrounds. Join us this year for this great day of learning about some of the remaining important artifacts from Jefferson County's pioneer period. Between 1839 to 1898 at least 22 gunsmiths were located in Jefferson County with the majority in the village of Brookville. Among them were John Showalter, Anthony Bonnett, William McCullough, Daniel Long and Solomon Harriger whose rifles were the cornerstone of carving the homesteads out of the wilderness and many of these weapons traveled westward with trappers and settlers throughout the country's 19th century expansion. Today these are highly collectable rifles as each was custom made for the recipient and vary greatly on materials, style and decorations relative to the gunsmiths flair or what was requested by the purchaser. Take time at the show to check out the various rifles and discuss their history with the various displayers.

As always the firearms building contains of both exhibitors and vendors who in addition to having original rifles, artifacts and accouterments will present some of the best custom-made muzzle loading rifles available by modern day gunsmith's.

In the second building the North Fork Chapter 29 of the Society for Pennsylvania will be display many prehistoric and early historic Native American artifacts from this region and be on hand to explain the age and importance of many of these relics and how they relate to the archaeology of western Pennsylvania. Flintknappers will be demonstrate how stone tools were created and the chapter will also have its popular Atlatl throwing area outdoors where visitors can try their hand at this thousands of years old hunting tradition which predates the invention of the bow and arrow.

A food court will be available throughout the day.



# ANTIQUE FIREARMS & INDIAN ARTIFACT SHOW

**SATURDAY, AUGUST 31ST, 2013**

**9:00 A.M. - 4:00 P.M.**

**JEFFERSON COUNTY FAIRGROUNDS**

**PA INTERSTATE 80, EXIT 81, 1/4 MILE NORTH OF THE EXIT**

**A JOINT VENTURE OF THE JEFFERSON COUNTY HISTORICAL SOCIETY &  
NORTH FORK CHAPER #29, SOCIETY FOR PENNSYLVANIA ARCHAEOLOGY**



**FEATURING ALL TYPES OF ANTIQUE FIREARMS THROUGH 1898  
A RAFFLE WILL BE HELD FOR A REPRODUCTION MUZZLELOADER**

**PREHISTOIC AND HISTORIC ARTIFACTS,  
ARTIFACT IDENTIFICATION, FLINT KNAPPING, PRIMITIVE GAMES AND  
WAA SANCTIONED ATLATL COMPETITION**

**ADMISSION: ADULTS - \$5.00 CHILDREN UNDER 12 - FREE**

**FOR TABLE RESERVATIONS OR INFORMATION CONTACT:  
EMAIL: [kburkett-jchc@windstream.net](mailto:kburkett-jchc@windstream.net) Tele: (814) 849-0077  
OR VISIT [WWW.JCHCONLINE.ORG](http://WWW.JCHCONLINE.ORG)**





## Annual Rifle Raffle

Its time again for the JCHC annual raffle with prizes to be drawn at 4:00 pm on August 31st at the Antique Firearms Show.

- ◆ **1st Prize** is a fifty-four caliber flintlock half-stock rifle custom built by Ron Luckenbill in the style of John Showalter. Showalter lived and manufactured rifles in Brookville (1850—1880) and is possibly responsible for creation of the distinctive *Brookville Eye* inlay used by many of the local gunsmiths to designate that their ware was from Jefferson County. In lieu of the rifle a cash prize of \$1000 is also offered.
- ◆ **2nd prize** is an custom pipe tomahawk also by Ron Luckenbill engraved with native American designs from local petroglyph sites.
- ◆ **3rd Prize** is a hand crafted powder horn and possible bag created by Mary Ann Unger
- ◆ **4th Prize** is a Longrifles of Pennsylvania book autographed by Russell Harriger (deceased).

Tickets can be obtained at the Jefferson County History Center for \$5.00 each or 5 for \$20.00.

We always need help selling so if you would like to receive a few books to help out the History Center please call us at (814) 849-0077.

JEFFERSON COUNTY HISTORICAL SOCIETY MUZZLELOADING RIFLE RAFFLE			
No. <<A>>	Name _____	Address _____	Phone _____
<b>1ST PRIZE – 54 CAL. ½ STOCK FLINTLOCK LONGRIFLE OR \$1000 CASH</b> <small>(STYLED AFTER JOHN SHOWALTER – JEFFERSON Co.) CUSTOM MADE BY RON LUCKENBILL</small>			
<b>2ND PRIZE - PIPE TOMAHAWK</b>			
<b>3RD PRIZE - POSSIBLE BAG &amp; POWDER HORN</b>			
<b>4TH PRIZE - LONGRIFLES OF PA BOOK</b>			
DRAWING AT THE 8TH ANNUAL JCHS ANTIQUE FIREARMS AND INDIAN ARTIFACTS SHOW AT THE JEFFERSON COUNTY FAIRGROUNDS ON AUGUST 31, 2013			
<small>SMALL GAMES LICENSE #233</small>		<small>DONATION: \$5.00 EACH OR 5/\$20.00</small>	
<small>WINNERS WILL BE POSTED ON WEBSITE AT <a href="http://jchconline.org">HTTP://JCHCONLINE.ORG</a></small>			



The Jefferson County  
Historical Society  
172-176 Main St.  
P O Box 51  
Brookville PA 15825

(814) 849-0077  
jchc@windstream.net

<http://jchconline.org>

### Museum Hours

Wed. - Sat.  
Noon - 5 pm

Closed Sun, Mon, Tue  
and holidays

We typically close when  
our schools close due  
to weather, and urge  
you to phone before  
traveling any distance

### Exhibit Admission Fees

JCHS Members - Free  
Non-members  
Individual - \$ 5  
Household - \$ 7  
Students - \$1

Genealogy Contracted  
Research  
\$25 /hr. (1 hr. minimum)

Assisted Research  
\$15/hr. (after 1st hr.)

If you would like to  
receive our  
Enewsletter  
and announcements  
of events and  
activities at the  
JCHC

SIGN UP AT  
[jchconline.org](http://jchconline.org)

NONPROFIT ORG.  
U.S.POSTAGE paid  
Permit No. 11  
Falls Creek, PA 15840

## Jefferson County Historical Society Annual Membership Application

Individual \$20/12 months

Family (Household) \$30/12 months

Name \_\_\_\_\_

Mailing Address \_\_\_\_\_

City \_\_\_\_\_ State \_\_\_\_\_ Zip \_\_\_\_\_

Phone \_\_\_\_\_ Email \_\_\_\_\_

Credit Card Type \_\_\_\_\_ Card # \_\_\_\_\_

### Our Mission

Our purpose is to engage people of all ages in the history of Jefferson County. We collect and care for relevant objects, images and documents and invite county residents and visitors to research our materials, interact with our exhibits, take part in our programs and read our publications, in order to encourage an understanding of our past and present and a vision for the future