



## In This Issue

Notes from the Director	2
Volunteer Opportunities	2
Cleaning Out	3
Joint Museums Card	3
Pictures by the Yard	4
Bowdish Railroad	4
History in a Hobby	4
Welcome to the Fair	5
Directories Wanted	5
Employment Opportunity	5
Charlie's Birthday Bash	6
Recent Accessions	7
New Members	7
Wanted Exhibitors	7
Bowdish Schedule	7

The Jeffersonian is published quarterly in March, June, September and December. Submissions are welcome and should be directed to Ken Burkett c/o the History Center.

## From the JCHS President

Edward Kaufman



As members of the organization it is my pleasure to welcome you to a new year and the Spring issue of the JCHS newsletter.

We're looking forward to an exciting year here at the History Center and I would like to take this opportunity to thank the Board of Directors for their ongoing dedicated participation to the planning and committee functions and to the staff and many volunteers for their day to day operation and management of the museum, research facilities and collections care.

Many projects are now underway including finalization of the America's Treasures grant for building upgrades and repairs that include repairing the front second story windows, repainting the front entrance doors and facade, and installing heat saving interior storm windows and 2 handicap stairlifts.

Our activities' schedule for the membership is full with events that include Charlie's Birthday Bash, Laurel Festival, Summer Membership Day, 5th Annual Gun Show, Fall Annual Dinner and the Victorian Christmas Celebration.

The museum has a couple of exciting new exhibits coming this year and as the time is near for the 150th Anniversary of America's Civil War, planning is underway for exhibits, programs and historical venue trips to honor the participation of Jefferson County in that turmoil.

I hope that you will take the time to enjoy the many benefits this organization provides. I encourage everyone to introduce a new member to the JCHS this year.

## JCHC Begins STEPS

The History Center recently entered the Standards and Excellence Program for History Organizations (STEPS). This year-long voluntary process will help improve our organization by educating the staff and board about the importance of standards and by assessing our long range and budget plans. As we refine our policies and procedures it will provide opportunities for improvement in our mission, vision, governance, audience, and the interpretation and management of our collections and historic buildings.

As the JCHC meets the goals of the STEPS program it will set the stage for eventually meeting the national standards accreditation program while fine tuning the History Center's current formal operations.

## Notes From the Director

**Ken Burkett**



### Events Calendar

#### March

**Wed. Mar. 3, 7 pm**  
**Bowdish Volunteers Meeting**

**Sat. Mar. 6 12-5 pm**  
**Charlie's Birthday Bash**  
**See Page 6**

**Thu. Mar. 11, 6:30 pm**  
**Board of Directors**

#### April

**Fri. Apr. 2, 6:30 pm**  
**Bowdish Model RR Show**

**Wed. Apr. 7, 7 pm**  
**Bowdish Volunteers Meeting**

**Thu. Apr. 8, 6:30 pm**  
**Board of Directors**

**Fri. Apr. 16, 7 pm**  
**Northfork Chapter 29**

#### May

**Wed. May 5, 7 pm**  
**Bowdish Volunteers Meeting**

**Fri. May 7, 6:30 pm**  
**Bowdish Model RR Show**

**Thu. May. 13, 6:30 pm**  
**Board of Directors**

**Fri. May. 21, 7 pm**  
**Northfork Chapter 29**

**Mark Your Calendar**  
**JCHC Summer Membership**  
**Event**

**Saturday, August 14**  
**Cooks Forest**  
**MORE DETAILS LATER**

As with most nonprofit organizations across the country, this year's major budget cuts will also impact the Jefferson County History Center. Although the final paperwork is still pending we have already been notified that there will be a significant reduction in the general operating funds we annually receive from both Jefferson County and the Pennsylvania Historic and Museum Commission. The reduction or elimination of many of the other granting programs that we have utilized so well over recent years for historical markers, public programs, exhibits and special technical assistance for our facilities, collections and storage will affect our operation.

Be assured that as the JCHC Board and staff implement our 2010 budget, we are carefully reviewing and making adjustments as best we can in an attempt to maintain our current level of operations and services throughout the next year and beyond.

In order to help replace some of our anticipated decreases, the JCHS Board is scheduling an ambitious year of events that include several additional fund raising activities. Among these is a public auction to be held early this summer. We have a donated storage space where items can be gathered beginning now, and we hope that everyone will remember our project with your donation of acceptable items.

Our 5<sup>th</sup> Annual Antique Rifle and Indian Artifact Show will be held on Saturday September 4<sup>th</sup> at the Jefferson County Fairgrounds and again this year we will be raffling several related items including a reproduction muzzleloader created by master gun builder Ron Luckenbill. Raffle tickets will be on sale soon and we plan to be on hand at the Hazen flea market, Jefferson County Fair and other venues with both information about the JCHS and raffle tickets for sale.

Other annual fund raising events will include our annual sidewalk and other sales during the Laurel Festival and historical downtown and cemetery walking tours and of course other happenings that are still in the works for Brookville's Victorian Christmas.

Last, but not least, our annual giving campaign has been a successful opportunity for members and local businesses to provide a tax deductible contribution. I hope that you continue to remember the Society in your list of annual donations and give some thought to the JCHS as a lasting legacy as part of your final estate planning.

### Volunteer Opportunities

We're always looking for help in the museum working with the collections, helping in the shop, or many other small jobs. Even if you have only a few hours a week, consider volunteering at the History Center or at one of these one day events:

- Hazen Flea Market, May thru Oct, (2 hr), - selling raffle tickets
- If you enjoy performing, consider helping at the Cemetery Torchlight Tours
- Laurel Festival Sidewalk Sale, Fri (2 hr), helping with our sales table
- Jefferson County Fair, third week in August, (2 hr), at the JCHC table
- Antique Rifle/Indian Artifact Show, (2 hr), admissions or selling raffle tickets
- McMurray Photography Project - watch for more information!
- Someone with a pickup truck willing to help us occasionally transport objects

## Events and Happenings



### Cleaning Out — Help us Out?

We're planning on having a benefit auction later this summer to help support the JCHC.

As you spring clean, replace items or just plain down-size, please consider items (household, furniture, tools, antiques or what-nots) that are acceptable for donation to this worthy cause. Please no clothing, bedding, tires, paints, stains or varnishes.

We have a donated storage area and the auction will be held here in Brookville. We'll be accepting donated items through May 29th which can be brought to the History Center - or we'll make arrangements to pick them up.

The JCHC is a non-profit organization and all donations are tax deductible. Contact us at (814) 849-0077 with questions.

## Joint Museums Rack Card

In a collaborative project between all of the county's non-profit historical organizations, a new tourist information rack card was recently designed and printed using a \$2,000 grant from the Jefferson County Tourism funds allocated from the county hotel tax.

The participating organizations include the Brockway Historical Society, Cool-spring Power Museum, Reynoldsville Historical Society, Jefferson County Fair Board, Jefferson County History Center, and the Punxsutawney Historical and Genealogical Society,

Approximately 20,000 cards were printed and will be distributed among each of the organizations for their use in various promotional activities and distribution throughout the region.

### TAKE A TOUR OF JEFFERSON COUNTY'S HISTORY



JEFFERSON COUNTY, PENNSYLVANIA, HAS A FASCINATING HISTORY, AND THERE'S NO BETTER PLACE TO BEGIN EXPLORING IT THAN IN THE COUNTY'S HISTORY CENTER, HISTORICAL SOCIETIES AND EXHIBITS.

EVEN IF YOU ONLY HAVE A DAY TO EXPLORE, YOU'LL DISCOVER THAT THESE SIX DESTINATIONS SPREAD ACROSS THE COUNTY ARE STAFFED BY FRIENDLY AND KNOWLEDGEABLE LOCALS. THESE CENTERS OFFER A SURPRISING GLIMPSE INTO THE DIVERSE AND VERY COLORFUL PAST OF ONE OF PENNSYLVANIA'S MOST INTERESTING COUNTIES.

## JCHC Board of Directors

Ed Kaufman-2012  
President

Paul Sorek -2010  
Vice President

Jon Noonan -2012  
Treasurer

Kathy Smith -2012  
Secretary

Dorrie Altman -2010  
Diana Farley -2010

Joni Kerr -2010  
Dick Beck -2011

Bill Crain -2011

Melanie Darrin -2011

Mark McKinney -2011

Jim Zimmerman -2012

## STAFF

Kenneth Burkett

Executive Director

kburkett-jchc@windstream.net

Carole Briggs

Curator

cbriggs-jchc@windstream.net

Theresa Costa

Administrative Asst

jchc@windstream.net

Romayne Connor

Experience Works

Caleb Kifer

CUP Graduate Intern

## VOLUNTEERS

Joyce McCullough

Jack Burkett

Vickie Storey

Harry Neuhard

Herman Eisenga

Art Schreckengost

Ray Hannold

Bill McCracken

Jo Schreckengost

Sandy Simchak

Quinton Boroi



## NEW EXHIBITS AT THE HISTORY CENTER

### Pictures By The Yard

Panoramic Photographs by Frederick E. Knapp

The newest second floor exhibit features a gallery full of yard long photographs from the Knapp collection in the JCHC archives. The interesting large group photos were taken between 1920 and 1942 and include family reunions, company employees, high school graduations, church organizations and musical groups. Stop by and help us identify a relative.



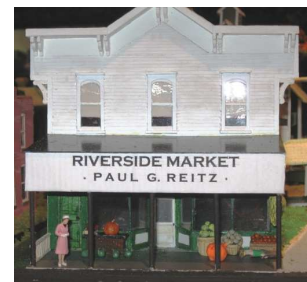
### Bowdish Model Railroad



The Bowdish Volunteers have been busy working on changes to the model railroad display and the exhibit will reopen with Charlie's Birthday Bash on Saturday, March 6th.

*Welcome to the Fair* is this year's theme which couples to the upcoming exhibit scheduled for our gallery B later this summer. The new layout will include some new buildings and animations centered around the fair theme.

The Bowdish volunteers are always accepting new volunteers to assist in construction and help run the trains. They meet the first Wednesday of each month at 7 pm and will continue running shows the first Friday of every month throughout the year.



Among the new additions is a miniature of the old Riverside Market in Brookville built by Harry Neuhard

### History in a Hobby



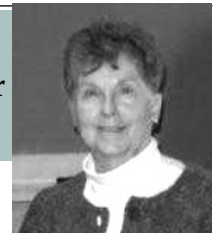
Roger Richards of Brookville is the latest in the History Center series of exhibits, *History in a Hobby*. Roger began his banking career in Brockway where he spent fourteen years before coming to the DuBois Deposit Bank in Brookville. He retired after working there for twenty-six years.

He has combined his career in banking with a lifelong interest in cars and trucks. "When I was a kid, I liked cars and trucks. I always had an interest in them, so when I went into banking and discovered the car banks, I continued with my interest."

Roger has a large collection of car banks made by Banthrico, Spec-Case, Ertl, and Gearbox models, and the History Center is exhibiting a portion of them in the Skylight Room on the second floor.

## Curator's Corner

Carole A. Briggs, Curator



### WELCOME TO THE FAIR!

#### Our Proposed Exhibit

The air is nippy and snow is on the ground but our thoughts are turned to sunny days in July and the cacophony of the Jefferson County Fair. Now held on the fairgrounds just north of I-80, our fair history goes back more than a century and a quarter to 1870 when the Mountain Park Association held it on Jacob Emery's farm off of what is now Rt. 28.

This spring the History Center plans to install a short-term exhibit in one of our upstairs galleries depicting the Jefferson County Fair history. Like most of the exhibits we produce, we look to our members and others living in the county and those living outside the county who have Jefferson County connections to help us.

What are your memories? What objects, documents, and photographs might you have tucked away that will help us show what the annual fair has meant to folks?

Exhibit design is the first step and design depends both on the chronology and the objects, photographs, and documents we have or can locate, so now is the time for those of you with things to loan or donate to give us a call at 849-0077 or Email us at [cbriggs-jchc@windstream.net](mailto:cbriggs-jchc@windstream.net).

We are looking for ribbons, trophies and other awards, fair program books, photographs, objects entered for judging, registration forms, tickets, and other fair-related memorabilia.

We collect memories, too! If you have fair memories to share, contact us and make arrangements for an oral history interview. This is a painless way for history to be recorded for posterity, so don't be shy



The entrance to the Jefferson County Fairgrounds when it was located on the present site of Memorial Park. Political advertising for president judge candidates Darr and Long date this photograph as 1925.

## Directories Wanted

The directories shelved in our research room often provide clues about where people lived and when various businesses opened and closed. We'd like to include Brockway, Punxsutawney, Reynoldsville and other directories from throughout the county and complete those related to Brookville.

Our recent check shows that we do have Brookville directories for 1905-06, 1913, 1917-18, 1927-28, 1983, 1987, 1989, 1992-1997, and 2000-2005.

If you have a directory that you like to donate to our research files - our future researchers will appreciate your contribution.

## Employment Opportunity

If you are 55 or older or know someone who is that would like to work 20 hrs a week at the Jefferson County History Center phone 849-0077 to learn more.

In order to be eligible, individuals must meet the Experience Works income level. For information about Experience Works check out <http://www.experienceworks.org>



# You're Invited to Charlie's Birthday Bash Saturday March 6, 12 - 5 pm

**Come spend a winter afternoon at the museum helping us celebrate the birthday of Charlie Bowdish.**



**Bowdish Model Railroad Shows (all afternoon) - Visit the Grand Opening of newly remodeled layout featuring the Jefferson County Fair.**



**A program on Charles Bowdish, *An Old Fashioned Feller*, which presents the life story of this interesting man and his passion for telling a good story and creating the miniature railroad. Program time is 2:30 pm.**



**Guided tours of the museum including the newly opened *Living on the Land* and *Pictures by the Yard* exhibits.**



**Light Refreshments**

**Free admission for members.  
Small admission fee for non-members**

### Recent Accessions

Quilt top, Richardsville Community Center, Warsaw Twp  
 Christy Memoir, Carol Afton, Brookville  
 Aluminum Coffee Pot, Lori Miller, Brookville  
 Humphrey Brick & Tile digital scans, Bill & Vada McCracken, Warsaw Twp.  
 Mining Ephemera, Roger Fye, Rathmel  
 Litch Lumber Ink Roller, David L. Taylor, DuBois  
 Work Genealogy, Emma Work, Brookville  
 Deep Roots: Brockway, James Sterrett, Brockway

**Remember the History Center - ask us before you dispose of items that might be of importance to our collections or researchers**

### New Members

Brian Baker  
 Mickey Stormer  
 Donna Reynolds  
 Mindy Morton  
 Chris & Kristie Taylor  
 John & Barbara Horn  
 Thad Turner  
 Robert Shriver  
 Lanny Fiscus  
 John Knapp  
 Alice Alexander

### Wanted - Gun and Artifact Exhibitors

The Jefferson County History Center is currently seeking individuals who would like to be exhibitors or vendors at the 5<sup>th</sup> annual *Antique Firearms and Indian Artifact Show* scheduled for Saturday, September 4, 2010.

The show will run from 9 am – 4 pm at the Jefferson County Fairgrounds near Brookville. Last year's event drew over 800 attendees to the 80 exhibitor tables. This year we're planning for an even bigger show.

The event is limited to weapons of pre-1898 vintage or suitable reproductions of such as well as accouterments and other items of interest for show or sale relating to the time period and gun collecting hobby. The Native American artifact part of the show is in an exhibit format only.

Vendor tables are \$20.00 each and Exhibitor tables are free. If you have any questions about the show, please contact Ken at the History Center (814) 849-0077 for a Exhibitor application or visit the JCHC web site.

PLEASE JOIN US FOR THE 5TH ANNUAL  
**ANTIQUE FIREARMS &  
 INDIAN ARTIFACTS SHOW**  
 JEFFERSON COUNTY FAIRGROUNDS, SEPTEMBER 4TH, 2010  
 PENNSYLVANIA INTERSTATE 80, EXIT 81, 1/4 MILE NORTH OF THE EXIT.  
 A JOINT VENTURE OF THE JEFFERSON COUNTY HISTORICAL SOCIETY AND  
 THE NORTH FORK CHAPTER #29 SOCIETY FOR PENNSYLVANIA ARCHAEOLOGY

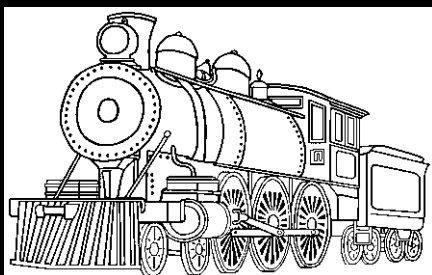


THE SHOW WILL FEATURE ALL TYPES OF ANTIQUE FIREARMS THROUGH 1898.  
 A RAFFLE DRAWING WILL BE HELD FOR A REPRODUCTION MUZZLELOADER.

THE ARTIFACT EXHIBIT WILL FEATURE BOTH PREHISTORIC AND HISTORIC  
 ARTIFACT DISPLAYS, FLINT KNAPPING, ARTIFACT IDENTIFICATION, AND AN OPEN  
 ATLATL COMPETITION.

THE SHOW WILL RUN FROM 9:00 A.M. UNTIL 4:00 P.M., AND ADMISSION WILL BE  
 \$5.00 PER PERSON AGE 16 AND OLDER. CHILDREN UNDER 16 FREE.  
 QUESTIONS? CONTACT THE JCHS AT 814.849.0077

SUPPORTED IN PART BY THE GREAT OUTDOORS VISITORS BUREAU  
 AS A JEFFERSON COUNTY ROOM TAX PROJECT



### Bowdish Model Railroad TRAIN SCHEDULE

Saturday, March 6, 12 - 5 pm  
 Friday, April 2, 6:30 pm  
 Friday, May 7, 6:30 pm



The Jefferson County  
Historical Society  
172-176 Main St.  
P O Box 51  
Brookville PA 15825

(814) 849-0077  
jchc@windstream.net

www.jchconline.org

### Museum Hours

Tuesday through  
Saturday  
Noon - 5pm

Closed Sundays,  
Mondays and holidays

We typically close when  
our schools close due  
to weather, and urge  
you to phone before  
traveling any distance

### Exhibit Admission Fees

JCHS Members - Free

Non-members

Individual - \$5

Household - \$7

Students - \$1

Genealogy Contracted  
Research  
(2 hr minimum)

Non-members - \$20/hr

Members - \$15/hr

Assisted Research  
\$10/hr (after 1st hr)

**PROBLEMS  
WITH YOUR  
NEWSLETTER  
MAILING!  
LET US KNOW  
AND WE'LL  
MAKE IT  
RIGHT**

**NONPROFIT ORG.  
U.S.POSTAGE paid  
Permit No. 11  
BROOKVILLE PA 15825**

### JCHS MEMBERSHIP BENEFITS

Opportunities to meet others interested in Jefferson County history • Unlimited use of the research facilities • Free admission to exhibits • Voting privileges at the annual meeting • Four issues of *The Jeffersonian* • History Center Shop Discount Days • Reduced admission to special events  
• The knowledge that you are contributing towards the preservation of our past

### MEMBERSHIP APPLICATION

**Individual \$20/12 months    Family (Household) \$30/12 months**

Name \_\_\_\_\_

Mailing Address \_\_\_\_\_

City \_\_\_\_\_ State \_\_\_\_\_ Zip \_\_\_\_\_

Phone \_\_\_\_\_ Email \_\_\_\_\_

The Jeffersonian is the official newsletter of the Jefferson County Historical Society, a non-profit organization, and is published four times a year in March, June September and December.

This newsletter along with general operating costs, special programs and exhibits are supported through grants from the Jefferson County Commissioners, the Pennsylvania Historic and Museum Commission, the Pennsylvania Humanities Council, the Lumber Heritage Region, the Institute of Museum and Library Services, the National Endowment for the Humanities, and contributors like you.