



In This Issue

Membership Meeting	2
Civil War Planning	2
Toy Exhibit	2
Events Calendar	2
From The President	3
Volunteer Recognition	3
Lincoln Document	4
Frazier Blacksmith Shop	4
Current Exhibits	2
Curator's Corner	5
2009 Gun Show	6
2009 Rifle Raffle	6
Building Bridges	6
Recent Accessions	7
New Members	7
Gift Shop	7

The Jeffersonian is published quarterly in March, June, September and December. Submissions are welcome and should be directed to Ken Burkett c/o the History Center

JCHC Quarterly Membership Activity

Something new has been added to the JCHC schedule of events this year! Plans are underway for quarterly meetings and activities for our membership.

Our first activity will be held at the History Center on Thursday evening, April 2, at 6:30 pm. We'll take a tour of the museum, have a first view of the soon to be open *Living on the Land* exhibit and visit the Bowditch Railroad, other exhibits and exciting changes that are occurring. The tour will be followed by a brief overview of the Society's plans and activities schedule for 2009.

This will be a great opportunity to see what the organization is doing, and to share your thoughts and ideas about future exhibits, programs and events.

Please mark this date on your calendars and try to attend. All JCHS members and their guests are invited

Awards Plaques

New permanent plaques have recently been installed in the main hall at the museum recognizing each of the seven past recipients and will incorporate future awardees of the Kate M. Scott and Arthur Altman award.



Included are the two most recent presentations of the Kate M. Scott award to the Northfork Chapter 29 of the Society for Pennsylvania Archaeology and the Arthur Altman award to Joan Matson at the JCHS annual dinner last October.



Ken Burkett, JCHC Director and Amy Henrici, Collections Manager for the Section of Vertebrate Paleontology at the Carnegie Museum of Natural History in Pittsburgh check over the mammoth tibia recently loaned to JCHC. The specimen will soon become part of the fossil section of the upcoming *Living on the Land* exhibit.



Romaine Conner recently joined the JCHC staff through the Jefferson County Experienced Works Program. She will be assisting with the shop and research areas.

Events Calendar

March

Thur. March 12, 6:30 pm
Board of Directors

Sat. Mar 28, 10-12:30 pm
Civil War Planning Session
Interested people welcome!

April

Thur. April 2, 6:30 pm
Spring Membership Activity

Fri. April 3, 6:30–8:00 pm
Bowditch model RR show

Thur. April 9, 6:30 pm
Board of Directors

Fri, April 17, 7:00 pm
Northfork Chapter 29

May

Fri. May 1, 6:30–8:00 pm
Bowditch model RR show

Thur. May 14, 6:30 pm
Board of Directors

Fri, May, 15, 7:00 pm
Northfork Chapter 29

Fri. May 22, 7:00 pm
An Evening with Fieldstone
Court House Grille & Pub

Ongoing

McMurray Photograph
Project Volunteers
Mondays 1:00-4:00 pm
It just takes a phone call to
join the volunteers

Contact Changes

Please note our general
email address has been
changed to

jchc@windstream.net

Events and Happenings

An Evening With Fieldstone

The popular Celtic group **Fieldstone** will return to Brookville on Friday evening May 22nd at 7:00 pm for an evening of dinner and entertainment in the dining room at the Courthouse Grille and Pub on Main Street, Brookville.

Fieldstone's music combines the Appalachian and Celtic styles and gives them a contemporary twist. It features the fiddle playing of Tara Sansom, Bekki Titchner on vocals, whistle and flute, and Mark Titchner on 6- and 12-string guitars and bouzouki. Fieldstone released their second CD, "One More Mile" in 2008.

A cover charge of \$25.00 per person will include a buffet dinner, entertainment, and drawings for door prizes. Tickets are available at the History Center or call (814) 849-0077. All proceeds benefit the Jefferson County History Center.



Civil War Commemoration Planning Sessions



Civil War Scholar Dr. Pencak

The Pennsylvania Humanities Council and Civil War scholar Dr. William Pencak from Penn State University has been lending expertise to a series of special planning sessions at the Jefferson County History Center.

This group, made up of local interested people, has been working one weekend each month to help develop ideas and plans that will result in exhibits, publications, events and other activities to assist with the upcoming state wide Civil War commemoration 2011 – 2015

Toy Exhibit Slated For July

We're seeking your help for a special toy exhibit titled **No Batteries Required** that will be installed in one of the 2nd floor galleries in July. The exhibit centers on older pre-1950's toys, but we would also like a selection of other things such as a kaleidoscope, BB gun, crayons, paint sets, Tinker toys, Legos, yo-yos, Viewmaster, model airplane kits, Silly Putty, Mr. Potato Head, Ant Farm, Play Doh, Etch-A-Sketch, Hoola Hoop, Hot Wheels, Nerf ball, Kooshball, Rubik's Cube, and all of the other interesting toys from the past that did not contain batteries.

Check your attic for things that people might enjoy seeing. We will be happy for their loan and will return them shortly after Christmas.

We are currently seeking items relating to Early Aviation in Jefferson County such as photographs, early tickets, schedules or anything relating to the development of flying and our early local airports.

Notes From the President

Diana Farley



It's the beginning of a new year and 2009 is shaping up to be a very exciting and productive year for the Jefferson County History Center.

I'd like to thank our Board of Directors for all of the time they have put in planning for 2009. We're very fortunate to have such a dedicated board! All of the committees have set their goals for 2009 and they're ready to go. Acting committees for 2009 include: Executive Committee-Diana Farley, Chair; Finance-Judy Brady, Chair; Marketing & Membership-Kathy Smith, Chair; Buildings & Grounds-Ed Kaufman, Chair; Events and Activities Committee-Joni Kerr, Chair; Shop-Kathy Smith, Chair and Bowdish Volunteers-Jon Noonan, Chair.

Our many JCHC volunteers were acknowledged at a reception on February 28th at the center. These volunteers are vital to the growth and progress of the JCHC. We strongly encourage our members to volunteer. It can be as simple as coming in and mailing newsletters, helping to sell items during the festivals, or assisting with "work day" projects at the Brady Craig house. If you would like to volunteer to help or serve on an active committee, please call Ken or Theresa at 814-849-0077.

I hope that you are able to attend our newly planned membership activities throughout the year as they will be a wonderful opportunity to become more involved with your society and take advantage of some interesting events and open only to our members. Please mark April 2nd on your calendars and try to attend this "get together" beginning at 6:30 pm at the History Center.

Last fall a local member of the Jefferson County Bar Association was visiting the museum for the first time. He was very, very impressed with all of the progress that has been made and commented that he felt it was "the Jewel of Jefferson County". We hope that everyone feels that way. Please stop in and see what's going on!

JCHC Board of Directors

Diana Farley - 2010
President

Ed Kaufman - 2009
Vice President

Judith Brady - 2009
Treasurer

Kathy Smith - 2009
Secretary

Jon Noonan - 2009

Dorrie Altman - 2010

Joni Kerr - 2010

Paul Sorek - 2010

Dick Beck - 2011

Bill Crain - 2011

Melanie Darrin—2011

Mark McKinney—2011

STAFF

Kenneth Burkett

Executive Director

kburkett-jchc@windstream.net

Carole Briggs

Curator

cbriggs-jchc@windstream.net

Theresa Costa

Administrative Asst

jchc@windstream.net

Romayne Connor

Experience Works

VOLUNTEERS

Joyce McCullough

Mary Ann Moore

Jack Burkett

Shawn Smith

Vickie Storey

Harry Neuhard

Herman Eisenga

Art Schreckengost

Ray Hannold

Bill McCracken

Jo Schreckengost

Sandy Simchak

Quinton Boroi

Volunteer Recognition Day

Volunteers are the biggest part of the Jefferson County History Center. Our volunteers serve in many ways. Sometimes just a few hours here and there doing odd jobs such as wiring a light or , painting, to spending a lot of time helping with special projects, research, working in the gift shop or running the railroad. Last year we logged over 3200 hours of volunteer assistance.

The Board of Directors and staff of JCHC annually acknowledge our dedicated group of volunteers with a small reception at the History Center on the February 28th Birthday of Charles Bowdish. These dedicated people are the greatest asset of the History Center - we couldn't operate or survive without them.



THANK YOU to all of Our Volunteers

Exhibits

Current Exhibits

Living on the Land

Visitors will be able to view completed sections and watch as we work section by section towards full completion in Spummer 2009!

Then and Now

Knapp/Clapie Photography
Second Floor, Small Gallery

Welcome to the Seat of Jefferson County

Landing Exhibit

It's the Cat's Meow

Second Floor, Skylight Room

The Lincoln Document

Second Floor, Small Gallery

Our New Parlor Furnishings

Second Floor, Ada Edelblute
Pearsall Parlor

Richardsville in Miniature

Skylight Room

Bowdish Miniature Railroad

Under Construction:
Reopens April 2nd

Frazier Sawmill Excavation

Grand Hall

Shirley VanAtta Watercolors

Grand Hall

Nora Brady Crazy Quilt

Grand Hall

Check us out on the
Web at:

www.orgsites.com/jeffersoncohistsoc

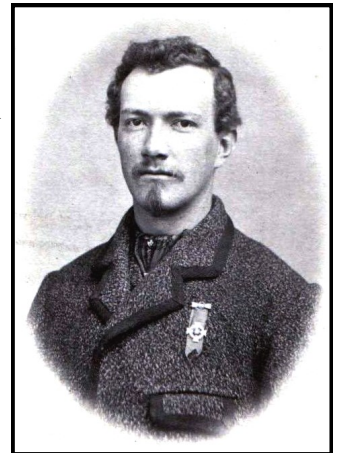
Lincoln Document

2009 is the bicentennial of the birth of our 16th president. Among the JCHC collections is a civil war document signed both by President Lincoln and Secretary of War Edwin Stanton on August 1, 1864 which promoted Samuel A. Craig to the rank of Captain in the Veterans Reserve Corps.

Craig, a native of Brookville, enlisted in the 105th PA Volunteers. He was severely wounded during the battles of Fair Oaks and Manassas which left him partially disabled. Eventually he was transferred to the Veterans Reserve Corps where many soldiers unfit for active field service due to wounds continued to serve their country in supporting military duties

When Lincoln was assassinated, Craig was commander of the Soldiers' Home in Indianapolis. As Lincoln's funeral train made its way from Washington to Springfield, non-commissioned officers of the Veteran Reserve Corps were detailed to act as a body-guard. The funeral cortege crossed the northwest section of Pennsylvania and arrived in Indianapolis at 7AM on Sunday, April 30th, and left at noon that day. During that time, Brookville's Captain Samuel A. Craig served in the Honor Guard of four for the deceased president.

Samuel Craig died in March, 1920 and is buried in the Brookville cemetery. His commission signed by Abraham Lincoln will remain on display at JCHC through June.



Captain Samuel Craig wearing the Kearney Cross which was awarded for gallantry

Frazier Sawmill Blacksmith Shop Exhibit

Excavations by the Northfork Chapter 29 at the early 19th century Frazier Sawmill located in Clear Creek State Park has been highlighted in a new case exhibit in the 2nd floor Grand Hall of the History Center.

Under the direction of professional archaeologists Amanda Valco and Brian Fritz, this excavation was initially brought to the attention of the archaeologists by the park staff because picnickers and hikers were disturbing the site. The dig has been conducted each summer since 2005 as a cooperative park education program where the public is invited to participate and learn about archaeology.

Excavations have now revealed a small building that once housed a blacksmith's forge from which over 3000 artifacts associated with the early lumbering industry have now been recovered. The exhibit displays maps, photos and a few of the representative artifacts found so far. Further excavations are being planned for summer weekends during 2009.



Curator's Corner

Carole A. Briggs, Curator



It's exciting to see our latest and largest exhibit, *Living on the Land*, come together in the E. M. Parker Gallery on the first floor. Carpenter Jeff Carrier had great suggestions for our log house and woodworker's shop. Artist Mandi Stein designed informative exhibit panels for our cases and has completed a mural in the cabin that will fool your eye! Board members raised and positioned the Murphy buggy atop this section, apparently with ease, and the executive director "chinked" the cabin interior wall!

We're focused now on our turn-of-the-century mining office and a 1950s-1960s hunting camp. The JCHS has abundant collections of pioneer materials and woodworking tools. What we don't have are turn-of-the-century office items. Our photograph collection includes only one interior view of a local office! Fortunately there is a neat website, www.officemuseum.com, that has large collections of images and descriptions of office things.

For instance, that website made it easy to identify our Burroughs Style #3 Adding Machine as appropriate for the office. Style #3 was manufactured as early as 1906. We know the provenance (fancy word for "where it came from") of our Edison Dictaphone and cylinders—they came from "Cliff" Deemer's office. We know he began his natural gas endeavors in 1901 and we know the Dictaphone was manufactured as early as 1888.

There are five typewriters in our collection. A check with www.officemuseum.com helped us identify our Underwood Standard, mfg 1901—as the one to use.

Most of the photographs show offices furnished with roll top desks, swivel chairs with armrests, and large tables. We do not own a roll top desk and our neighbor, Bill Bowley, says they are hard to find and when found sell for an arm-and-a-leg, so when the History Center Shop was undergoing some reorganization we looked at a desk that had once been a teacher's desk. Would it work? Back to the photographs and a peek at an early Sears catalog confirmed desks with wooden drawer pulls like ours would work, although we'd like to think a potential roll top desk donor is out there somewhere!



A mining office attributed to the Marlin Opera House
Block ca 1920s

We have gas lights, ledgers, carbide lamps, a wall telephone, and several other objects. We do not have ink wells, pens, a wire desk basket, a wire or metal wastebasket, or an early calendar for a year between 1900 and 1920.

Camps in our county were often built and furnished with odds and ends. When we were rearranging objects at Brady Craig, we counted chairs and decided we didn't need them all. At first, we thought we'd pick out a set to go around an old card table we have. Should the chairs have yellow, red, wooden, or metal seats? "It's a camp, let's use one of each!" And so we will.

We have an ice box, a pump, and a little laundry coal stove. We're on the lookout for old bedding, a "perk" coffee pot, cookware, and miscellaneous dishes. A mounted deer head or at least a rack or two, fishing rods, and other sports paraphernalia would add to the camp mood and so would a set of poker chips and kids' board games.

With your help, we'll have four great partial room replications when *Living On the Land* is completed this summer. And way back in 2001-2002 when we held thirteen focus groups throughout the county, that's what you said you enjoyed at a museum-stepping back in time!

Gun Show Applications

The Jefferson County History Center is currently seeking individuals who would like to be an exhibitor or vendor at the organizations 4th annual *Antique Firearms and Indian Artifact Show* which is scheduled for Saturday, August 22. The show will run from 9 am – 4 pm at the Jefferson County Fairgrounds near Brookville. Last year's event drew over 800 people attendees to the 80 exhibitor tables. This year we are planning for an even bigger show.

The show is limited to weapons of pre-1898 vintage or suitable reproductions of such as well as accouterments and other items of interest for show or sale relating to the time period and gun collecting hobby. The Indian Artifact part of the show is in an exhibit format only. Vendor tables are \$20.00 each and Exhibitor tables are always free.

Individuals with Native American artifacts collections are also invited to participate.

If you have any questions about the show, please contact kenburkett@comcast.net, or (814) 849-0077.

PLEASE JOIN US FOR THE 4TH ANNUAL ANTIQUE FIREARMS & INDIAN ARTIFACTS SHOW

JEFFERSON COUNTY FAIRGROUNDS, AUGUST 22ND 2008
PENNSYLVANIA INTERSTATE 80, EXIT 81, 1/4 MILE NORTH OF EXIT

A JOINT VENTURE OF THE
JEFFERSON COUNTY HISTORICAL SOCIETY
AND THE NORTH FORK CHAPTER #29
SOCIETY FOR PENNSYLVANIA ARCHAEOLOGY



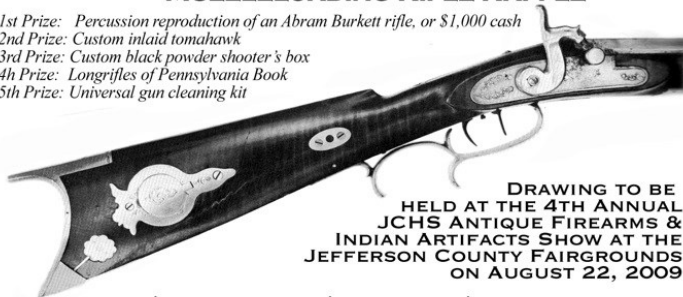
THE SHOW WILL FEATURE ANTIQUE FIREARMS
THROUGH 1898 (FOR EXHIBIT & SALES), WITH A
RAFFLE FOR A REPRODUCTION MUZZLELOADER.

THE ARTIFACT EXHIBIT WILL FEATURE BOTH PREHISTORIC
AND HISTORIC ARTIFACT DISPLAYS, AS WELL AS
AN OPEN ATLATL COMPETITION.

SHOW IS OPEN 9 A.M. TO 4 P.M. ADMISSION IS \$5.00 FOR
ANYONE 16 OR OLDER. CALL 814.849.0077 FOR INFO.

JEFFERSON COUNTY HISTORICAL SOCIETY MUZZLELOADING RIFLE RAFFLE

- 1st Prize: Percussion reproduction of an Abram Burkett rifle, or \$1,000 cash
- 2nd Prize: Custom inlaid tomahawk
- 3rd Prize: Custom black powder shooter's box
- 4th Prize: Longrifles of Pennsylvania Book
- 5th Prize: Universal gun cleaning kit



DRAWING TO BE
HELD AT THE 4TH ANNUAL
JCHS ANTIQUE FIREARMS &
INDIAN ARTIFACTS SHOW AT THE
JEFFERSON COUNTY FAIRGROUNDS
ON AUGUST 22, 2009

\$5.00 PER TICKET - \$20.00 FOR 5 - \$40.00 FOR 10
NEED NOT BE PRESENT TO WIN, MUST BE 18 OR OLDER TO PURCHASE

Small Games License # 233, Special Permit #288
Winners will be posted on website at www.orgsites.com/pa/jeffersoncohistsoc

2009 Rifle Raffle

Tickets for the 2009 JCHC Muzzleloader go on sale beginning April 1 with the drawing held at the gun show on August 22nd.

This year 5 prizes are being offered that include a 50 caliber percussion custom built reproduction of an Abram Burkett rifle (Jefferson County rifle maker) or \$1000 cash, a custom inlaid tomahawk, custom black powder shooters box, an autographed copy of Longrifles of Pennsylvania and a universal gun cleaning kit.

Tickets are \$5 each or 5 for \$20.

If you would like to purchase or help sell tickets, please contact the JCHC.

Building Bowdish Bridges

Bowdish Volunteer Bill McCracken puts the finishing touches on the tunnel leading to the newly installed railroad trestle on the Bowdish Model Railroad display. Soon the buildings will be re-set, the animations activated and the trains up and running for the reopening of the Bowdish Railroad Sound and Light Show.

Beginning April 3rd, the trains will be chugging along the tracks and the entire museum will be open the first Friday evening of each month at 6:30 pm.

Watch for upcoming special Laurel Festival show schedules!



Gift Shop Consignments

The Shop Committee is always interested in local artisans who would like to consign items for sale in the JCHC gift shop. With the scheduled summer 2009 grand opening of our new exhibit, *Living on the Land*, we anticipate a large influx of visitors.

The contract agreement is easy, consignees set the price with 25% of the sales income going to the JCHC. We provide a quarterly remittance and statement of sales, and ask that inventories be rotated every 180 days.



If you would like to place items in the shop under our consignment program, please contact Theresa at the History Center for more information..

Recent Acquisitions

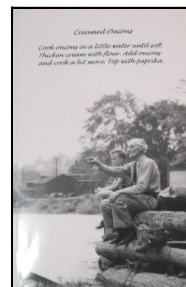
Bowdish Photograph, Anonymous
 Batastini tin sign, Anonymous
 Cora Canning hymnal, Anonymous
 Cameras and equipment, Keith D. Briggs, Brookville
 Book, Jean Dush, Brookville
 Italian Chitarra, Carol Leathem, Brookville
 School and community ephemera, Suzanne Hornbeck,
 Brookville Postcards, Anonymous
 Lithograph Scrapbook, Mary Dindino, Prince Frederick, MD
 Templeton, Schwartzlander Genealogy, Bill and Vada McCracken
 Brookville Photographs ca 1930-1936, Rose Blake Ames, Brookville
 Caldwell's Atlas front piece, Eugene Moore, Clarendon
 Kerosene and early electric irons, Linda Leech, New Castle
 78rpm records, Anonymous, Brookville
 Pensioners' Records 1883, Purchase
 Knapp photographs, Mark McKinney, Brookville
 Walnut secretary, Reed's Mill watercolor, Carole Briggs, Brookville
 Burkett/Geer Genealogy, David Yates, Brookville
 Carberry ledgers, Evelyn Fike, Brookville
 Octagon barn painting, Anonymous, Brookville
 Canning ephemera, Mike Tattersall, Brookville
 Woolrich hunting jacket, William Gilbert, Sigel
 Keller genealogy, Leroy Keller, Brookville
 Reitz memoir, Mary Ruth Reitz, New York City

New Members

Mike Duckett, Falls Creek
 Francis Leech, Brookville
 Michelle Venuti, Big Flats, NY
 Bill Evans, Brookville
 Ronald Glenn, Corsica
 Emma Dimoff, Pittsburgh
 John Pearsall, Brookville
 Mike Thom, Punxsutawney
 Donna Barnett, McClure
 Robert Edmonds, Gibsonia
 Calvin Fike, Luthersburg
 Susan Elko, Flanders, NY
 Jane Stahlman, Dillsburg
 Barbara Clontz, Erie
 Richard Smith, Park Forest, IL
 Paul Sorek, Brookville
 Mari Shaffer, Woodridge VA
 Buzz Hudock, Dubois
 Frank Wilson, Wylie, TX
 Leroy Elder, Lexington, KY
 Paul & Ruth Bing, Maple Heights, OH
 Stan Hetrick, Hermitage
 Darcy Keihl, Corsica
 Boyd Neal, New Bethlehem
 Richard Malacrane, Indiana
 Bob Moone, Pittsburgh
 George Miller, Brookville
 Justin McCandless, Brookville
 Patrick Barr, Brookville
 Sherry Miller, Angola, NY

Creamed Onions For Supper

Find out what the other
Great Depression
was really like



Co-authored by Jefferson
 County History Center
 Curator, Carole Briggs and
 Clarion University History Professor, Todd
 Pfannestiel; Creamed Onions For Supper
 takes a look at the Great Depression in Jef-
 ferson County through the eyes of those
 who lived it. This 280 page collection of
 first hand accounts of the Great Depression

Museum Hours

**Tuesday through
Saturday
Noon - 5pm**

**Closed Sundays,
Mondays and holidays**

**We typically close when
our schools close due
to weather and urge you
to phone before
traveling any distance**

Exhibit Admission Fees

**JCHS Members - Free
Non-members - \$3
Children - \$1**

**Membership includes
reduced fees for
Events and Activities**

**Genealogy
Assisted Research**

**Non-members - \$20/hr
Members - \$15/hr**

**The Jefferson County
Historical Society
172-176 Main St.
P O Box 51
Brookville PA 15825
(814) 849-0077**

**PROBLEMS WITH
YOUR NEWSLET-
TER MAILING!
LET US KNOW
AND WE'LL MAKE
IT RIGHT**

jchc@windstream.net

JCHS MEMBERSHIP BENEFITS

Opportunities to meet others interested in Jefferson County history • Unlimited use of the research facilities • Free admission to exhibits • Voting privileges at the annual meeting • Four issues of ***The Jeffersonian*** • History Center Shop Discount Days • Reduced admission to special events • The knowledge that you are contributing towards the preservation of our past.

MEMBERSHIP APPLICATION

Individual \$20/12 months

Family (Household) \$30/12 months

Name ☐

☐

Mailing Address _____

City _____ State _____ Zip _____

Phone _____ Email _____

The Jeffersonian is the official newsletter of the Jefferson County Historical Society, a non-profit organization, and is published four times a year in January, April, July and October.

This newsletter along with general operating costs, special programs and exhibits are supported through grants from the Jefferson County Commissioners, the Pennsylvania Historical and Museum Commission, the Pennsylvania Humanities Council, the Lumber Heritage Region, the Institute of Museum and Library Services, the National Endowment for the Humanities, and contributors like you.

**NONPROFIT ORG.
U.S.POSTAGE paid
Permit No. 11
BROOKVILLE PA 15825**